

SERIES 5570, IMPACT RESISTANT SLIDING GLASS DOOR

TO ACHIEVE PROPER ANCHOR EDGE DISTANCE, THE FOLLOWING SHEETS SHOW ANCHOR PATTERNS THAT MUST BE USED WHEN INSTALLING WITH THE FRAME FIN-ADDON. ANCHORS TO BE INSTALLED THROUGH THE MAIN FRAME AND NOT THE FRAME FIN-ADDON.

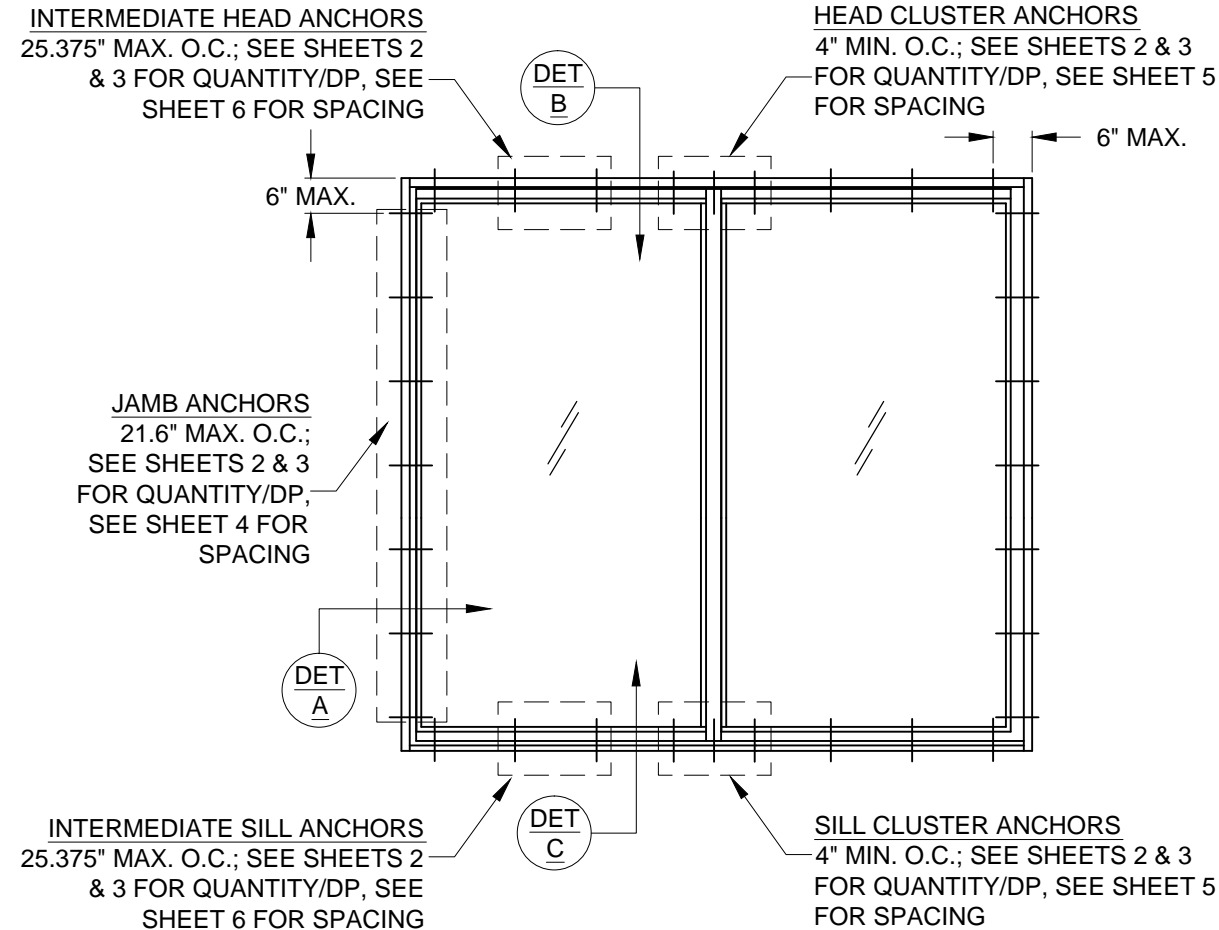


TABLE A:

Group	Anchor	Substrate	Frame Member	Min. Edge Distance	Min. Embedment
A	#12, steel SMS (G5) or 410 S.S. SMS, (min. 11 threads/in)	P.T. Southern Pine (SG=0.55)	Head/Sill/Jamb	9/16"	1-3/8"
			P-hook	9/16"	1-3/8"
		Aluminum, 6063-T5* (0.125" min. thickness)	Head/Sill/Jamb	3/8"	1/8"
			P-hook	3/8"	1/8"
		Steel, A36* (0.060" min. thickness)	Head/Sill/Jamb	3/8"	0.060"
			P-hook	3/8"	0.060"
	1/4" Elco Ultracon	P.T. Southern Pine (SG=0.55)	Jamb	1"	1-3/8"
			P-hook	1"	1-3/8"
	1/4" Elco 410 S.S. CreteFlex	P.T. Southern Pine (SG=0.55)	Head/Sill/Jamb	1"	1-3/8"
			P-hook	1"	1-3/8"
B	#12, steel wood screw (G5)	P.T. Southern Pine (SG=0.55)	Head/Sill/Jamb	9/16"	1-3/8"
			P-hook	9/16"	1-3/8"
C	1/4" Elco Ultracon	Concrete (min. 2.85 ksi)	P-hook	1"	1-3/8"
		Ungrouted CMU, (ASTM C-90)	Jamb	1"	1-1/4"
			P-hook	1"	1-1/4"
			Jamb	1-3/4"	1-1/4"
	1/4" Elco 410 S.S. CreteFlex	Ungrouted CMU, (ASTM C-90)	P-hook	1-3/4"	1-1/4"
		Concrete (min. 3.35 ksi)	Head/Sill/Jamb	1-3/16"	1-3/4"
		P-hook	1"	1-3/4"	
	1/4" Elco 18-8 S.S. Aggre-Gator	Concrete (min. 2.22 ksi)	Head/Sill/Jamb	1-1/2"	1-3/8"
			P-hook	1-1/2"	1-3/8"
		Ungrouted CMU, (ASTM C-90)	Jamb	2"	1-1/4"
			P-hook	2"	1-1/4"
	D	1/4" Elco Ultracon	P.T. Southern Pine (SG=0.55)	Head/Sill/Jamb	1"
			P-hook	1"	1-3/8"
Concrete (min. 2.85 ksi)			Head/Sill/Jamb	2-1/2"	1-3/8"
			P-hook	2-1/2"	1-3/8"
	1/4" Elco 410 S.S. CreteFlex	Ungrouted CMU, (ASTM C-90)	Jamb	2-1/2"	1-1/4"
			P-hook	2-1/2"	1-1/4"
		Concrete (min. 3.35 ksi)	Head/Sill/Jamb	2-1/2"	1-3/4"
			P-hook	2-1/2"	1-3/8"
		Ungrouted CMU, (ASTM C-90)	Jamb	2-1/2"	1-1/4"
			P-hook	2-1/2"	1-1/4"

* MIN. OF 3 THREADS BEYOND THE METAL SUBSTRATE.

FOR STEEL STUDS, MIN. FU=45 KSI & MIN. FY=33 KSI.

"UNGROUTED CMU" VALUES MAY BE USED FOR GROUTED CMU APPLICATIONS.

INSTRUCTIONS:

- 1) KNOWING THE REQUIRED DESIGN PRESSURE OF THE OPENING, THE ANCHOR REQUIREMENTS FOR THE SLIDING GLASS DOORS MAY BE DETERMINED FROM DESIGN PRESSURE TABLES 1 OR 2, DEPENDING ON THE REINFORCEMENT LEVEL DESIRED.
- 2) LOCATE THE SLIDING GLASS DOOR SIZE ON THE TABLE, USING THE FRAME HEIGHT AND THE NOMINAL PANEL WIDTH. IF YOUR EXACT SIZE IS NOT SHOWN, ROUND UP TO THE NEXT GREATER LISTED WIDTH AND/OR HEIGHT.
- 3) CHOOSE WHICH ANCHOR GROUP (A-D) IS MOST APPLICABLE. ANCHORS ARE DEFINED IN TABLE A, THIS SHEET, ALONG WITH THE CORRESPONDING SUBSTRATE, MINIMUM EMBEDMENT AND MINIMUM EDGE DISTANCE.
- 4) FROM THE DESIGN PRESSURE TABLES (TABLES 1 OR 2), VERIFY THAT THE OPENING'S REQUIRED DESIGN PRESSURE IS MET OR EXCEEDED. USE THE ANCHOR QUANTITIES SHOWN.
- 5) INSTALL AS PER THE GUIDELINES OF THIS SHEET-SET.

Nominal Panel Size		Design		Certification Numbers
Width	Height	(+) psf	(-) psf	
48"	120"	60	65	190-267, 774
60"	96"	80	80	190-265, 787
48"	96"	90	90	190-266, 773
48"	96"	60	60	190-263, 770
60"	120"	45	50	190-504, 1079

GENERAL NOTES:

- 1) INSTALLATION SCREWS & FRAME SPLICES TO BE SEALED WITH NARROW JOINT SEALANT.
- 2) DOOR SIZES MUST BE VERIFIED FOR COMPLIANCE WITH EGRESS REQUIREMENTS PER THE IBC, AS APPLICABLE.
- 3) DRAWINGS DEPICT EXTERIOR-GLAZING, HOWEVER INTERIOR-GLAZING MAY BE SUBSTITUTED.



Series	Rev A	Rev B	Rev C	Rev D	Rev E	Rev F	Rev G	Rev H	Rev I	Rev J	Rev K	Rev L	Rev M	Rev N	Rev O	Rev P	Rev Q	Rev R	Rev S	Rev T	Rev U	Rev V	Rev W	Rev X	Rev Y	Rev Z	Rev AA	Rev AB	Rev AC	Rev AD	Rev AE	Rev AF	Rev AG	Rev AH	Rev AI	Rev AJ	Rev AK	Rev AL	Rev AM	Rev AN	Rev AO	Rev AP	Rev AQ	Rev AR	Rev AS	Rev AT	Rev AU	Rev AV	Rev AW	Rev AX	Rev AY	Rev AZ	Rev BA	Rev BB	Rev BC	Rev BD	Rev BE	Rev BF	Rev BG	Rev BH	Rev BI	Rev BJ	Rev BK	Rev BL	Rev BM	Rev BN	Rev BO	Rev BP	Rev BQ	Rev BR	Rev BS	Rev BT	Rev BU	Rev BV	Rev BV	Rev BW	Rev BX	Rev BY	Rev BZ	Rev CA	Rev CB	Rev CC	Rev CD	Rev CE	Rev CF	Rev CG	Rev CH	Rev CI	Rev CJ	Rev CK	Rev CL	Rev CM	Rev CN	Rev CO	Rev CP	Rev CQ	Rev CR	Rev CS	Rev CT	Rev CU	Rev CV	Rev CW	Rev CX	Rev CY	Rev CZ	Rev DA	Rev DB	Rev DC	Rev DD	Rev DE	Rev DF	Rev DG	Rev DH	Rev DI	Rev DJ	Rev DK	Rev DL	Rev DM	Rev DN	Rev DO	Rev DP	Rev DQ	Rev DR	Rev DS	Rev DT	Rev DU	Rev DV	Rev DV	Rev DW	Rev DX	Rev DY	Rev DZ	Rev EA	Rev EB	Rev EC	Rev ED	Rev EE	Rev EF	Rev EG	Rev EH	Rev EI	Rev EJ	Rev EK	Rev EL	Rev EM	Rev EN	Rev EO	Rev EP	Rev EQ	Rev ER	Rev ES	Rev ET	Rev EU	Rev EV	Rev EV	Rev EW	Rev EX	Rev EY	Rev EZ	Rev FA	Rev FB	Rev FC	Rev FD	Rev FE	Rev FF	Rev FG	Rev FH	Rev FI	Rev FJ	Rev FK	Rev FL	Rev FM	Rev FN	Rev FO	Rev FP	Rev FQ	Rev FR	Rev FS	Rev FT	Rev FU	Rev FV	Rev FV	Rev FW	Rev FX	Rev FY	Rev FZ	Rev GA	Rev GB	Rev GC	Rev GD	Rev GE	Rev GF	Rev GG	Rev GH	Rev GI	Rev GJ	Rev GK	Rev GL	Rev GM	Rev GN	Rev GO	Rev GP	Rev GQ	Rev GR	Rev GS	Rev GT	Rev GU	Rev GV	Rev GV	Rev GW	Rev GX	Rev GY	Rev GZ	Rev HA	Rev HB	Rev HC	Rev HD	Rev HE	Rev HF	Rev HG	Rev HH	Rev HI	Rev HJ	Rev HK	Rev HL	Rev HM	Rev HN	Rev HO	Rev HP	Rev HQ	Rev HR	Rev HS	Rev HT	Rev HU	Rev HV	Rev HV	Rev HW	Rev HX	Rev HY	Rev HZ	Rev IA	Rev IB	Rev IC	Rev ID	Rev IE	Rev IF	Rev IG	Rev IH	Rev II	Rev IJ	Rev IK	Rev IL	Rev IM	Rev IN	Rev IO	Rev IP	Rev IQ	Rev IR	Rev IS	Rev IT	Rev IU	Rev IV	Rev IV	Rev IW	Rev IX	Rev IY	Rev IZ	Rev JA	Rev JB	Rev JC	Rev JD	Rev JE	Rev JF	Rev JG	Rev JH	Rev JI	Rev JJ	Rev JK	Rev JL	Rev JM	Rev JN	Rev JO	Rev JP	Rev JQ	Rev JR	Rev JS	Rev JT	Rev JU	Rev JV	Rev JV	Rev JW	Rev JX	Rev JY	Rev JZ	Rev KA	Rev KB	Rev KC	Rev KD	Rev KE	Rev KF	Rev KG	Rev KH	Rev KI	Rev KJ	Rev KK	Rev KL	Rev KM	Rev KN	Rev KO	Rev KP	Rev KQ	Rev KR	Rev KS	Rev KT	Rev KU	Rev KV	Rev KV	Rev KW	Rev KX	Rev KY	Rev KZ	Rev LA	Rev LB	Rev LC	Rev LD	Rev LE	Rev LF	Rev LG	Rev LH	Rev LI	Rev LJ	Rev LK	Rev LL	Rev LM	Rev LN	Rev LO	Rev LP	Rev LQ	Rev LR	Rev LS	Rev LT	Rev LU	Rev LV	Rev LV	Rev LW	Rev LX	Rev LY	Rev LZ	Rev MA	Rev MB	Rev MC	Rev MD	Rev ME	Rev MF	Rev MG	Rev MH	Rev MI	Rev MJ	Rev MK	Rev ML	Rev MM	Rev MN	Rev MO	Rev MP	Rev MQ	Rev MR	Rev MS	Rev MT	Rev MU	Rev MV	Rev MV	Rev MW	Rev MX	Rev MY	Rev MZ	Rev NA	Rev NB	Rev NC	Rev ND	Rev NE	Rev NF	Rev NG	Rev NH	Rev NI	Rev NJ	Rev NK	Rev NL	Rev NM	Rev NN	Rev NO	Rev NP	Rev NQ	Rev NR	Rev NS	Rev NT	Rev NU	Rev NV	Rev NV	Rev NW	Rev NX	Rev NY	Rev NZ	Rev OA	Rev OB	Rev OC	Rev OD	Rev OE	Rev OF	Rev OG	Rev OH	Rev OI	Rev OJ	Rev OK	Rev OL	Rev OM	Rev ON	Rev OO	Rev OP	Rev OQ	Rev OR	Rev OS	Rev OT	Rev OU	Rev OV	Rev OV	Rev OW	Rev OX	Rev OY	Rev OZ	Rev PA	Rev PB	Rev PC	Rev PD	Rev PE	Rev PF	Rev PG	Rev PH	Rev PI	Rev PJ	Rev PK	Rev PL	Rev PM	Rev PN	Rev PO	Rev PP	Rev PQ	Rev PR	Rev PS	Rev PT	Rev PU	Rev PV	Rev PV	Rev PW	Rev PX	Rev PY	Rev PZ	Rev QA	Rev QB	Rev QC	Rev QD	Rev QE	Rev QF	Rev QG	Rev QH	Rev QI	Rev QJ	Rev QK	Rev QL	Rev QM	Rev QN	Rev QO	Rev QP	Rev QQ	Rev QR	Rev QS	Rev QT	Rev QU	Rev QV	Rev QV	Rev QW	Rev QX	Rev QY	Rev QZ	Rev RA	Rev RB	Rev RC	Rev RD	Rev RE	Rev RF	Rev RG	Rev RH	Rev RI	Rev RJ	Rev RK	Rev RL	Rev RM	Rev RN	Rev RO	Rev RP	Rev RQ	Rev RR	Rev RS	Rev RT	Rev RU	Rev RV	Rev RV	Rev RW	Rev RX	Rev RY	Rev RZ	Rev SA	Rev SB	Rev SC	Rev SD	Rev SE	Rev SF	Rev SG	Rev SH	Rev SI	Rev SJ	Rev SK	Rev SL	Rev SM	Rev SN	Rev SO	Rev SP	Rev SQ	Rev SR	Rev SS	Rev ST	Rev SU	Rev SV	Rev SV	Rev SW	Rev SX	Rev SY	Rev SZ	Rev TA	Rev TB	Rev TC	Rev TD	Rev TE	Rev TF	Rev TG	Rev TH	Rev TI	Rev TJ	Rev TK	Rev TL	Rev TM	Rev TN	Rev TO	Rev TP	Rev TQ	Rev TR	Rev TS	Rev TT	Rev TU	Rev TV	Rev TV	Rev TW	Rev TX	Rev TY	Rev TZ	Rev UA	Rev UB	Rev UC	Rev UD	Rev UE	Rev UF	Rev UG	Rev UH	Rev UI	Rev UJ	Rev UK	Rev UL	Rev UM	Rev UN	Rev UO	Rev UP	Rev UQ	Rev UR	Rev US	Rev UT	Rev UU	Rev UV	Rev UV	Rev UW	Rev UX	Rev UY	Rev UZ	Rev VA	Rev VB	Rev VC	Rev VD	Rev VE	Rev VF	Rev VG	Rev VH	Rev VI	Rev VJ	Rev VK	Rev VL	Rev VM	Rev VN	Rev VO	Rev VP	Rev VQ	Rev VR	Rev VS	Rev VT	Rev VU	Rev VV	Rev VV	Rev VW	Rev VX	Rev VY	Rev VZ	Rev WA	Rev WB	Rev WC	Rev WD	Rev WE	Rev WF	Rev WG	Rev WH	Rev WI	Rev WJ	Rev WK	Rev WL	Rev WM	Rev WN	Rev WO	Rev WP	Rev WQ	Rev WR	Rev WS	Rev WT	Rev WU	Rev WV	Rev WV	Rev WW	Rev WX	Rev WY	Rev WZ	Rev XA	Rev XB	Rev XC	Rev XD	Rev XE	Rev XF	Rev XG	Rev XH	Rev XI	Rev XJ	Rev XK	Rev XL	Rev XM	Rev XN	Rev XO	Rev XP	Rev XQ	Rev XR	Rev XS	Rev XT	Rev XU	Rev XV	Rev XV	Rev XW	Rev XX	Rev XY	Rev XZ	Rev YA	Rev YB	Rev YC	Rev YD	Rev YE	Rev YF	Rev YG	Rev YH	Rev YI	Rev YJ	Rev YK	Rev YL	Rev YM	Rev YN	Rev YO	Rev YP	Rev YQ	Rev YR	Rev YS	Rev YT	Rev YU	Rev YV	Rev YV	Rev YW	Rev YX	Rev YY	Rev YZ	Rev ZA	Rev ZB	Rev ZC	Rev ZD	Rev ZE	Rev ZF	Rev ZG	Rev ZH	Rev ZI	Rev ZJ	Rev ZK	Rev ZL	Rev ZM	Rev ZN	Rev ZO	Rev ZP	Rev ZQ	Rev ZR	Rev ZS	Rev ZT	Rev ZU	Rev ZV	Rev ZV	Rev ZW	Rev ZX	Rev ZY	Rev ZZ
--------	-------	-------	-------	-------	-------	-------	-------	-------	-------	-------	-------	-------	-------	-------	-------	-------	-------	-------	-------	-------	-------	-------	-------	-------	-------	-------	--------	--------	--------	--------	--------	--------	--------	--------	--------	--------	--------	--------	--------	--------	--------	--------	--------	--------	--------	--------	--------	--------	--------	--------	--------	--------	--------	--------	--------	--------	--------	--------	--------	--------	--------	--------	--------	--------	--------	--------	--------	--------	--------	--------	--------	--------	--------	--------	--------	--------	--------	--------	--------	--------	--------	--------	--------	--------	--------	--------	--------	--------	--------	--------	--------	--------	--------	--------	--------	--------	--------	--------	--------	--------	--------	--------	--------	--------	--------	--------	--------	--------	--------	--------	--------	--------	--------	--------	--------	--------	--------	--------	--------	--------	--------	--------	--------	--------	--------	--------	--------	--------	--------	--------	--------	--------	--------	--------	--------	--------	--------	--------	--------	--------	--------	--------	--------	--------	--------	--------	--------	--------	--------	--------	--------	--------	--------	--------	--------	--------	--------	--------	--------	--------	--------	--------	--------	--------	--------	--------	--------	--------	--------	--------	--------	--------	--------	--------	--------	--------	--------	--------	--------	--------	--------	--------	--------	--------	--------	--------	--------	--------	--------	--------	--------	--------	--------	--------	--------	--------	--------	--------	--------	--------	--------	--------	--------	--------	--------	--------	--------	--------	--------	--------	--------	--------	--------	--------	--------	--------	--------	--------	--------	--------	--------	--------	--------	--------	--------	--------	--------	--------	--------	--------	--------	--------	--------	--------	--------	--------	--------	--------	--------	--------	--------	--------	--------	--------	--------	--------	--------	--------	--------	--------	--------	--------	--------	--------	--------	--------	--------	--------	--------	--------	--------	--------	--------	--------	--------	--------	--------	--------	--------	--------	--------	--------	--------	--------	--------	--------	--------	--------	--------	--------	--------	--------	--------	--------	--------	--------	--------	--------	--------	--------	--------	--------	--------	--------	--------	--------	--------	--------	--------	--------	--------	--------	--------	--------	--------	--------	--------	--------	--------	--------	--------	--------	--------	--------	--------	--------	--------	--------	--------	--------	--------	--------	--------	--------	--------	--------	--------	--------	--------	--------	--------	--------	--------	--------	--------	--------	--------	--------	--------	--------	--------	--------	--------	--------	--------	--------	--------	--------	--------	--------	--------	--------	--------	--------	--------	--------	--------	--------	--------	--------	--------	--------	--------	--------	--------	--------	--------	--------	--------	--------	--------	--------	--------	--------	--------	--------	--------	--------	--------	--------	--------	--------	--------	--------	--------	--------	--------	--------	--------	--------	--------	--------	--------	--------	--------	--------	--------	--------	--------	--------	--------	--------	--------	--------	--------	--------	--------	--------	--------	--------	--------	--------	--------	--------	--------	--------	--------	--------	--------	--------	--------	--------	--------	--------	--------	--------	--------	--------	--------	--------	--------	--------	--------	--------	--------	--------	--------	--------	--------	--------	--------	--------	--------	--------	--------	--------	--------	--------	--------	--------	--------	--------	--------	--------	--------	--------	--------	--------	--------	--------	--------	--------	--------	--------	--------	--------	--------	--------	--------	--------	--------	--------	--------	--------	--------	--------	--------	--------	--------	--------	--------	--------	--------	--------	--------	--------	--------	--------	--------	--------	--------	--------	--------	--------	--------	--------	--------	--------	--------	--------	--------	--------	--------	--------	--------	--------	--------	--------	--------	--------	--------	--------	--------	--------	--------	--------	--------	--------	--------	--------	--------	--------	--------	--------	--------	--------	--------	--------	--------	--------	--------	--------	--------	--------	--------	--------	--------	--------	--------	--------	--------	--------	--------	--------	--------	--------	--------	--------	--------	--------	--------	--------	--------	--------	--------	--------	--------	--------	--------	--------	--------	--------	--------	--------	--------	--------	--------	--------	--------	--------	--------	--------	--------	--------	--------	--------	--------	--------	--------	--------	--------	--------	--------	--------	--------	--------	--------	--------	--------	--------	--------	--------	--------	--------	--------	--------	--------	--------	--------	--------	--------	--------	--------	--------	--------	--------	--------	--------	--------	--------	--------	--------	--------	--------	--------	--------	--------	--------	--------	--------	--------	--------	--------	--------	--------	--------	--------	--------	--------	--------	--------	--------	--------	--------	--------	--------	--------	--------	--------	--------	--------	--------	--------	--------	--------	--------	--------	--------	--------	--------	--------	--------	--------	--------	--------	--------	--------	--------	--------	--------	--------	--------	--------	--------	--------	--------	--------	--------	--------	--------	--------	--------	--------	--------	--------	--------	--------	--------	--------	--------	--------	--------	--------	--------	--------	--------	--------	--------	--------	--------	--------	--------	--------	--------	--------	--------	--------	--------	--------	--------	--------	--------	--------	--------	--------	--------	--------	--------	--------	--------	--------	--------	--------	--------	--------	--------	--------	--------	--------	--------	--------	--------	--------	--------	--------	--------

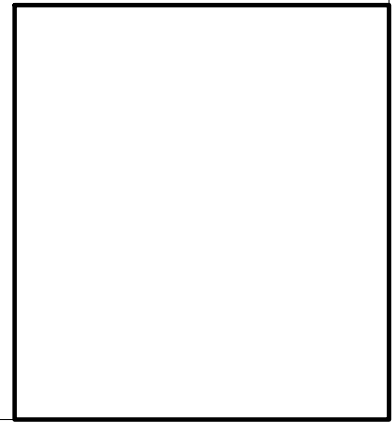


TABLE 1:

Design Pressure (DP) and Anchor Quantities Required															
Use this table for: Glass Types 1, 3 or 5 Astragal Reinforcement #29 Lockstile Reinforcement #25 or #26 Std. Interlock Reinforcement #27			Door Unit Height												
			80"				84"				96"				
			68-15/16" DLO Height				72-15/16" DLO Height				84-15/16" DLO Height				
			Anchor Group				Anchor Group				Anchor Group				
			A	B	C	D	A	B	C	D	A	B	C	D	
Nominal Panel Width	24"	19-1/8" DLO Width	Design Pressure	+60 / -60 psf				+60 / -60 psf				+60 / -60 psf			
			Head/Sill	C3+1	C3+1	C3+1	C3+1	C3+1	C3+1	C3+1	C3+1	C3+1	C3+1	C3+1	C3+1
			Jamb	5	5	5	5	5	5	5	5	5	5	5	5
			P-hook	7	7	7	7	7	7	7	7	8	8	8	8
	30"	25-1/8" DLO Width	Design Pressure	+60 / -60 psf				+60 / -60 psf				+60 / -60 psf			
			Head/Sill	C3+1	C3+1	C3+1	C3+1	C3+1	C3+1	C3+1	C3+1	C3+1	C3+1	C3+1	C3+1
			Jamb	5	5	5	5	5	5	5	5	5	5	5	5
			P-hook	7	7	7	7	7	7	7	7	8	8	8	8
	36"	31-1/8" DLO Width	Design Pressure	+60 / -60 psf				+60 / -60 psf				+60 / -60 psf			
			Head/Sill	C3+1	C3+1	C3+1	C3+1	C3+1	C3+1	C3+1	C3+1	C3+1	C3+1	C3+1	C3+1
			Jamb	5	5	5	5	5	5	5	5	5	5	5	5
			P-hook	7	7	7	7	7	7	7	7	8	8	8	8
42"	37-1/8" DLO Width	Design Pressure	+60 / -60 psf				+60 / -60 psf				+60 / -60 psf				
		Head/Sill	C3+1	C3+1	C3+1	C3+1	C3+1	C3+1	C3+1	C3+1	C3+1	C3+1	C3+1	C3+1	
		Jamb	5	5	5	5	5	5	5	5	5	5	5	5	
		P-hook	7	7	7	7	7	7	7	7	8	8	8	8	
48"	43-1/8" DLO Width	Design Pressure	+60 / -60 psf				+60 / -60 psf				+60 / -60 psf				
		Head/Sill	C3+2	C3+1	C3+1	C3+1	C3+2	C3+1	C3+1	C3+1	C5+2	C3+1	C3+1	C3+1	
		Jamb	5	5	5	5	5	5	5	5	5	5	6	5	
		P-hook	7	7	7	7	7	7	7	7	8	8	8	8	

ANCHORAGE TYPE PER SUBSTRATE REQUIRED TO ACHIEVE THE DESIGN PRESSURE, USING THE ANCHOR QUANTITIES LISTED BELOW. SEE TABLE A, SHEET 1 FOR COMPLETE ANCHOR LIMITATIONS.

THE MAXIMUM DP AT THESE ANCHOR QUANTITIES. ADDITIONALLY, THE MAXIMUM POSITIVE DP DUE TO THE SILL HEIGHT MUST ALSO BE CONSIDERED, SEE TABLE B1, THIS SHEET.

OF ANCHORS THROUGH THE HEAD & SILL. (EX: FOR C3+1, 3 ANCHORS CLUSTERED AT PANEL MEETING POINT AND 1 ANCHOR REQUIRED AT INTERMEDIATE OF PANEL).

TOTAL # OF ANCHORS THROUGH THE JAMB.

FOR POCKET CONFIGURATIONS, THE # OF ANCHORS REQUIRED THROUGH THE P-HOOK, PERPENDICULAR TO THE GLASS.

TABLE B1:

Water-Limited (+) Design Pressure		
Sill Riser	Nom. Sill Height	Max. (+) DP Allowed
None	1-11/16"	See Note 2
42	2-1/2"	+38.7 psf
43	3-1/2"	+60.0 psf
44	4-1/16"	+60.0 psf
45	4-5/8"	+60.0 psf

DLO WIDTH = NOM. PANEL WIDTH - 8-9/16"
DLO HEIGHT = DOOR HEIGHT - 11-1/16"
PANEL HEIGHT = DOOR HEIGHT - 2-1/2"

TABLE NOTES:

- 1) IF WATER INFILTRATION RESISTANCE IS REQUIRED, THE LESSER VALUES OF EITHER TABLE 1 AND TABLE B1 DETERMINES THE WATER LIMITED (+) DP.
- 2) IF WATER INFILTRATION RESISTANCE IS NOT REQUIRED, A SILL RISER IS NOT REQUIRED. IF SO, +DP'S SHOWN IN TABLE 1 MAY BE USED.
- 3) SHEET APPLIES TO 2, 3 AND 4 TRACK CONFIGURATIONS.



Series		Rev A		Rev B		Rev C		Rev D		Rev E	
SGD-5570		NTS		2 OF 9		5570FIN.1					
Title		Date		Drawn By		Rev A Date		Rev B Date		Rev C Date	
VINYL SLIDING GLASS DOOR		09/20/16		J ROSOWSKI							
Desc.											
DP & ANCHOR QUANTITY TABLE											

TABLE 2:

Design Pressure (DP) and Anchor Quantities Required																						
Use this table for: Glass Types 2 or 4 Astragal Reinforcement #29 Lockstile Reinforcement #25 HD Interlock Reinforcement #28		Door Unit Height																				
		80"				84"				96"				108"				120"				
		68-15/16" DLO Height				72-15/16" DLO Height				84-15/16" DLO Height				96-15/16" DLO Height				108-15/16" DLO Height				
		Anchor Group				Anchor Group				Anchor Group				Anchor Group				Anchor Group				
		A	B	C	D	A	B	C	D	A	B	C	D	A	B	C	D	A	B	C	D	
Nominal Panel Width	24"	19-1/8" DLO Width	Design Pressure +100 / -100 psf				+100 / -100 psf				+100 / -100 psf				+60 / -65 psf				+60 / -65 psf			
		Head/Sill	C3+1	C3+1	C3+1	C3+1	C3+1	C3+1	C3+1	C3+1	C5+1	C3+1	C3+1	C3+1	C3+1	C3+1	C3+1	C3+1	C3+1	C3+1	C3+1	C3+1
		Jamb	5	5	5	5	5	5	5	5	5	5	5	5	6	6	6	6	6	6	6	6
	P-hook	7	7	7	7	7	7	7	7	8	8	8	8	9	9	9	9	10	10	10	10	
	30"	25-1/8" DLO Width	Design Pressure +100 / -100 psf				+100 / -100 psf				+100 / -100 psf				+60 / -65 psf				+60 / -65 psf			
		Head/Sill	C5+1	C3+1	C3+1	C3+1	C5+1	C3+1	C3+1	C3+1	C5+1	C3+1	C5+1	C3+1	C3+1	C3+1	C3+1	C3+1	C5+1	C3+1	C3+1	C3+1
		Jamb	5	5	5	5	5	5	6	5	5	5	7	5	6	6	6	6	6	6	6	6
	P-hook	7	7	7	7	7	7	7	7	8	8	8	8	9	9	9	9	10	10	10	10	
	36"	31-1/8" DLO Width	Design Pressure +100 / -100 psf				+100 / -100 psf				+100 / -100 psf				+60 / -65 psf				+60 / -65 psf			
		Head/Sill	C5+2	C3+1	C5+1	C3+1	C5+2	C3+1	C5+1	C3+1	C5+2	C5+1	C5+1	C3+1	C5+1	C3+1	C3+1	C3+1	C5+1	C3+1	C5+1	C3+1
		Jamb	5	5	6	5	5	5	6	5	5	5	7	5	6	6	6	6	6	6	6	6
	P-hook	7	7	7	7	7	7	7	7	8	8	8	8	9	9	9	9	10	10	10	10	
	42"	37-1/8" DLO Width	Design Pressure +100 / -100 psf				+100 / -100 psf				+100 / -100 psf				+60 / -65 psf				+60 / -65 psf			
		Head/Sill	C5+2	C3+2	C5+2	C3+1	C5+2	C5+2	C5+2	C3+1	C5+2	C5+2	C5+2	C3+1	C5+1	C3+1	C5+1	C3+1	C5+1	C5+1	C5+1	C3+1
		Jamb	5	5	7	5	5	5	7	5	5	5	8	5	6	6	6	6	6	6	7	6
	P-hook	7	7	7	7	7	7	7	7	8	8	8	8	9	9	9	9	10	10	10	10	
	48"	43-1/8" DLO Width	Design Pressure +100 / -100 psf				+100 / -100 psf				+92 / -92 psf *				+60 / -65 psf				+60 / -65 psf			
		Head/Sill	C5+2	C5+2	C5+2	C3+2	C5+2	C5+2	C5+2	C3+2	C5+2	C5+2	C5+2	C5+2	C5+2	C3+1	C5+2	C3+1	C5+2	C5+1	C5+2	C3+1
		Jamb	5	5	7	5	5	5	8	5	5	5	9	5	6	6	7	6	6	6	8	6
	P-hook	7	7	7	7	7	7	8	8	8	8	9	9	9	9	9	9	10	10	10	10	
	54"	49-1/8" DLO Width	Design Pressure +80 / -80 psf				+80 / -80 psf				+80 / -80 psf				+45 / -50 psf				+45 / -50 psf			
		Head/Sill	C5+2	C3+2	C5+2	C3+2	C5+2	C3+2	C5+2	C3+2	C5+2	C5+2	C5+2	C3+2	C5+2	C5+2	C5+2	C5+2	C5+2	C5+2	C5+2	C5+2
		Jamb	5	5	6	5	5	5	7	5	5	5	8	5	6	6	6	6	6	6	7	6
	P-hook	7	7	7	7	7	7	7	7	8	8	8	8	9	9	9	9	10	10	10	10	
60"	55-1/8" DLO Width	Design Pressure +80 / -80 psf				+80 / -80 psf				+80 / -80 psf				+45 / -50 psf				+45 / -50 psf				
	Head/Sill	C5+3	C3+2	C5+3	C3+2	C5+3	C3+2	C5+3	C3+2	C5+3	C5+2	C5+3	C3+2	C5+2	C5+2	C5+2	C5+2	C5+2	C5+2	C5+2	C5+2	
	Jamb	5	5	6	5	5	5	7	5	5	5	8	5	6	6	6	6	6	6	7	6	
P-hook	7	7	7	7	7	7	7	7	8	8	8	8	9	9	9	9	10	10	10	10		

* +/-100.0 PSF FOR ANCHOR GROUPS B, C & D.

ANCHORAGE TYPE PER SUBSTRATE REQUIRED TO ACHIEVE THE DESIGN PRESSURE, USING THE ANCHOR QUANTITIES LISTED BELOW. SEE TABLE A, SHEET 1 FOR COMPLETE ANCHOR LIMITATIONS.

THE MAXIMUM DP AT THESE ANCHOR QUANTITIES. ADDITIONALLY, THE MAXIMUM POSITIVE DP DUE TO THE SILL HEIGHT MUST ALSO BE CONSIDERED, SEE TABLE B2, THIS SHEET.

OF ANCHORS THROUGH THE HEAD & SILL. (EX: FOR C3+1, 3 ANCHORS CLUSTERED AT PANEL MEETING POINT AND 1 ANCHOR REQUIRED AT INTERMEDIATE OF PANEL).

TOTAL # OF ANCHORS THROUGH THE JAMB.

FOR POCKET CONFIGURATIONS, THE # OF ANCHORS REQUIRED THROUGH THE P-HOOK, PERPENDICULAR TO THE GLASS.

TABLE B2:

Water-Limited (+) Design Pressure		
Sill Riser	Nom. Sill Height	Max. (+) DP Allowed
None	1-11/16"	See Note 2
42	2-1/2"	+38.7 psf
43	3-1/2"	+60.0 psf
44	4-1/16"	+80.0 psf
45	4-5/8"	+100.0 psf

DLO WIDTH = NOM. PANEL WIDTH - 8-9/16"
DLO HEIGHT = DOOR HEIGHT - 11-1/16"
PANEL HEIGHT = DOOR HEIGHT - 2-1/2"

TABLE NOTES:

- 1) IF WATER INFILTRATION RESISTANCE IS REQUIRED, THE LESSER VALUES OF EITHER TABLE 2 AND TABLE B2 DETERMINES THE WATER LIMITED (+) DP.
- 2) IF WATER INFILTRATION RESISTANCE IS NOT REQUIRED, A SILL RISER IS NOT REQUIRED. IF SO, +DP'S SHOWN IN TABLE 2 MAY BE USED.
- 3) SHEET APPLIES TO 2, 3 AND 4 TRACK CONFIGURATIONS.



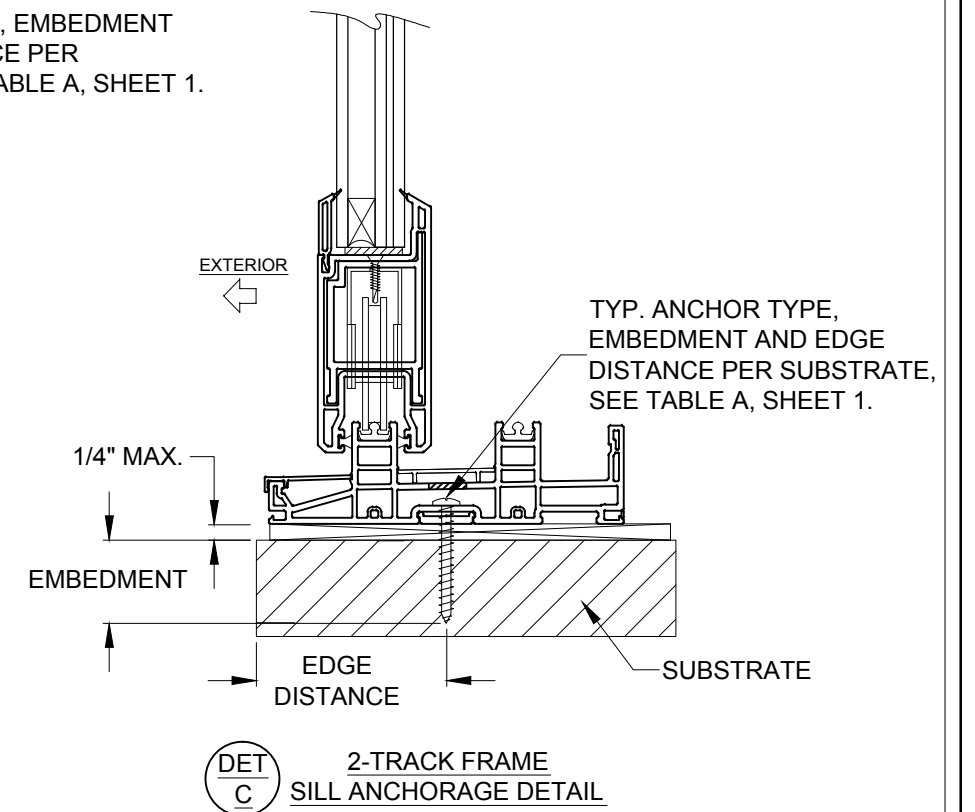
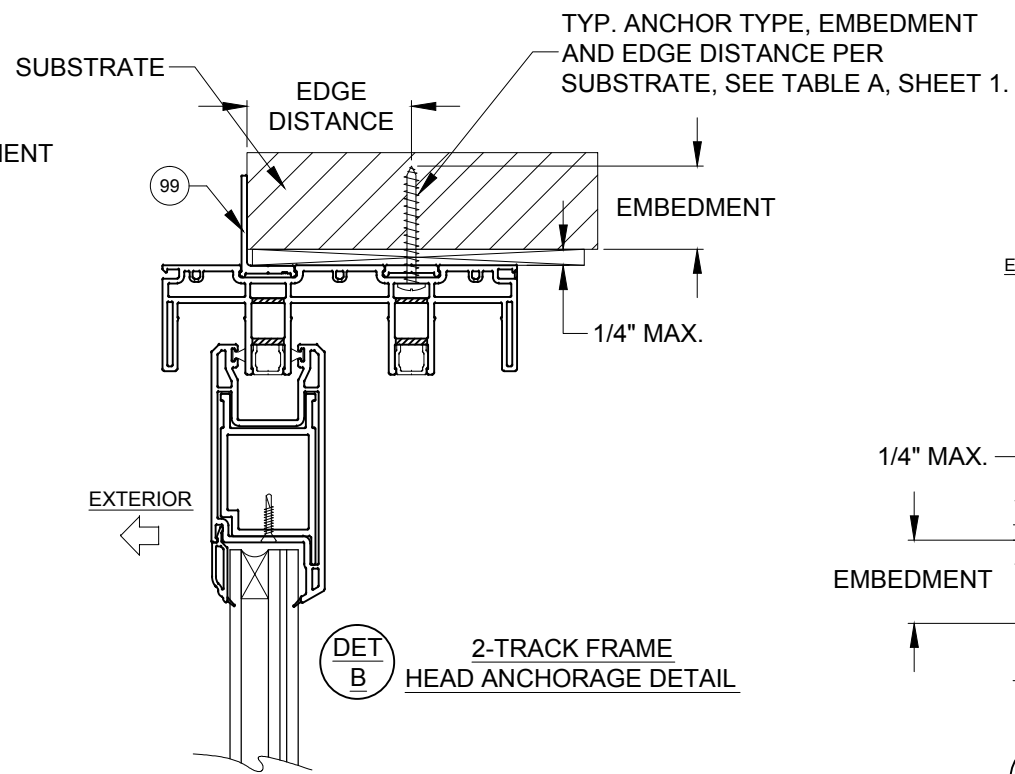
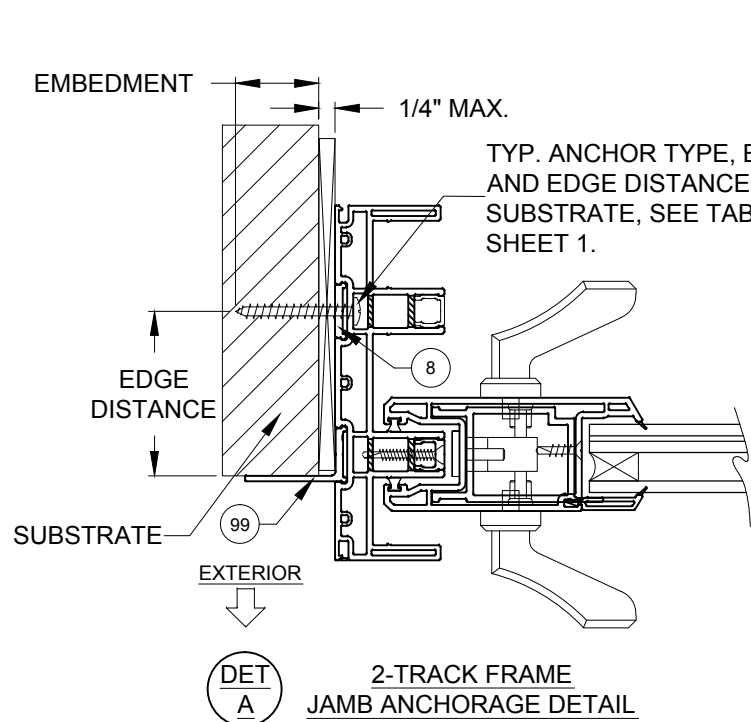
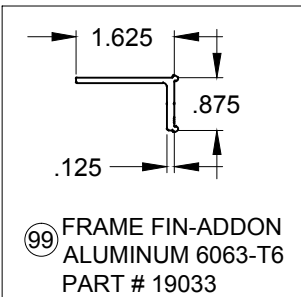
VINYL SLIDING GLASS DOOR		Date	09/20/16
DP & ANCHOR QUANTITY TABLE		Drawn By	J ROSOWSKI
Series	Rev A	Rev A Date	
Rev B	Rev B Date	Rev B Date	
SGD-5570	Scale	N.T.S.	Sheet
		3 OF 9	DWG No.
		5570FIN.1	Rev. No.

NOTES

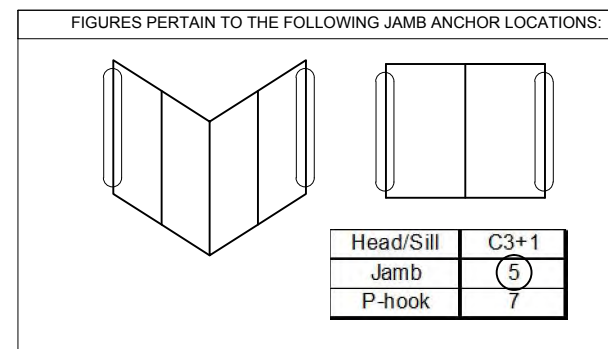
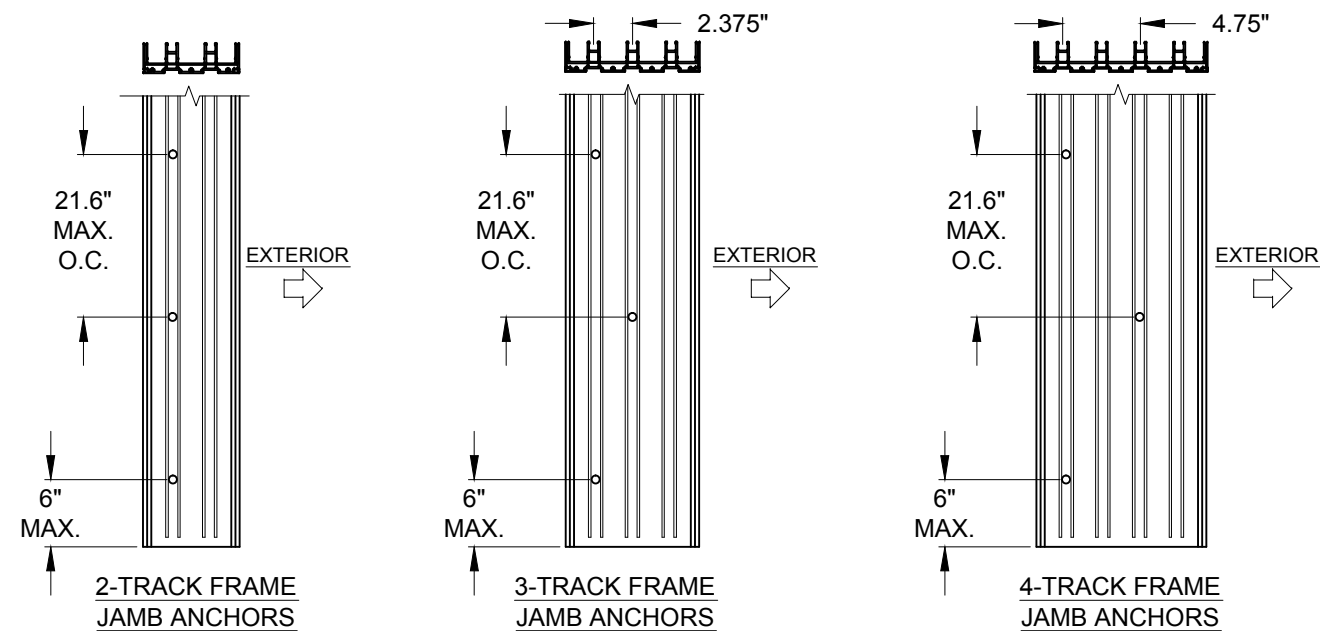
1) DETAILS APPLY TO 2, 3 AND 4 TRACK CONFIGURATIONS.

2) REFER TO TABLE A FOR ANCHOR CONSTRAINTS.

3) SILL ANCHORAGE WITH FIN-ADDON IS UNCHANGED FROM THE BOX FRAME ANCHORAGE.



JAMB ANCHORS LAYOUT, (PARTIAL VIEW):



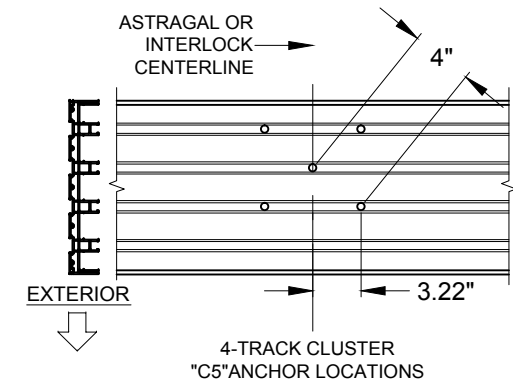
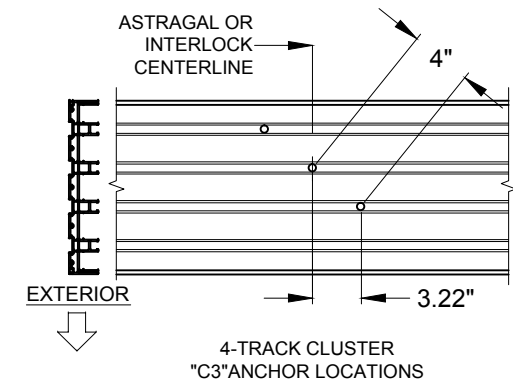
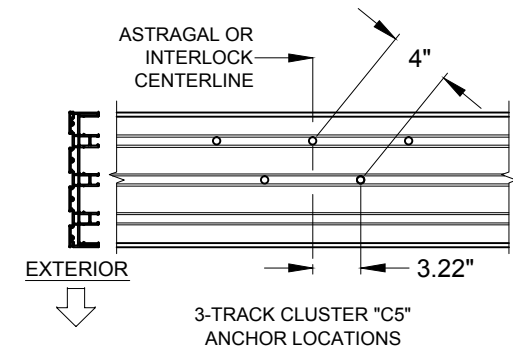
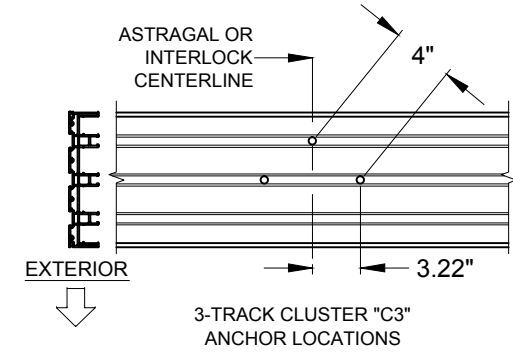
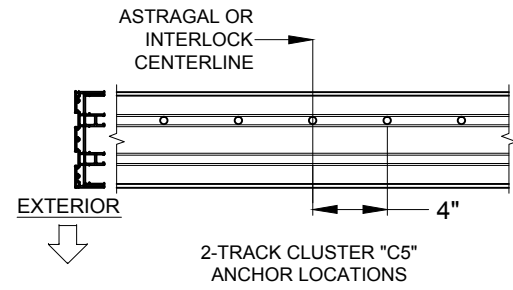
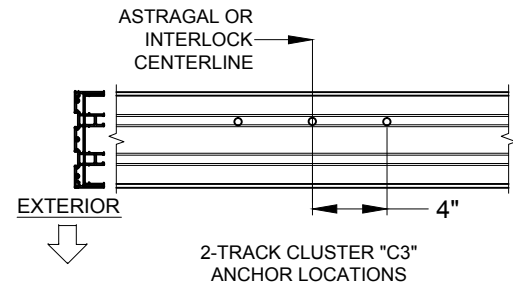
NOTES:

1) STANDARD ANCHOR LOCATIONS SHOWN. FOR 3 AND 4-TRACK JAMBS, ANCHORS IN THE INTERIOR TRACK MAY BE LOCATED IN THE ADJACENT TRACK AS REQUIRED TO MEET MIN. EDGE DISTANCE CONSTRAINTS FROM THE INTERIOR.

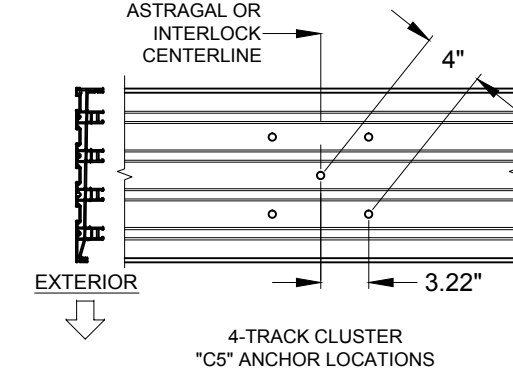
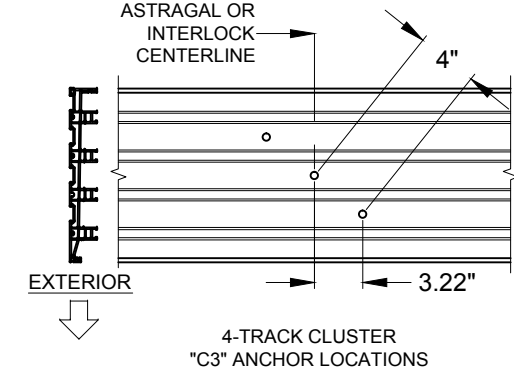
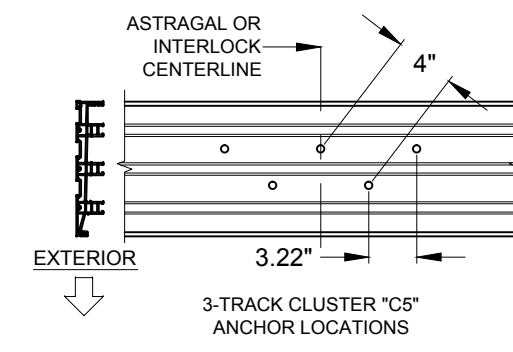
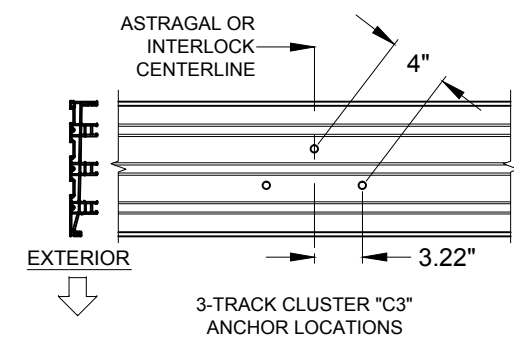
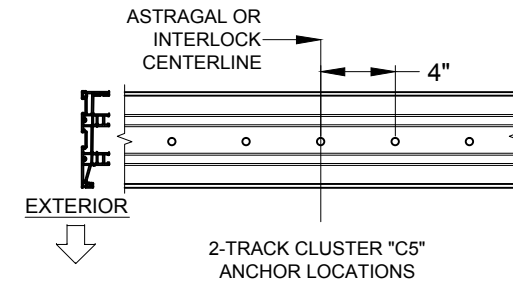
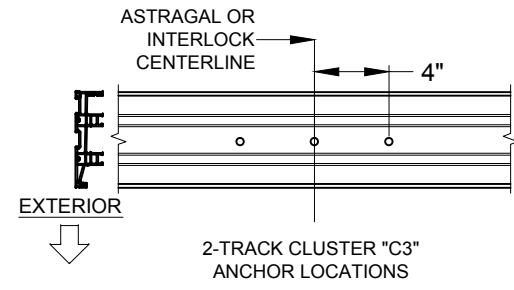


Series	SGD-5570	Scale	NTS	Sheet	4 OF 9	DWG No.	5570FIN.1	Rev. No.	
Title	VINYL SLIDING GLASS DOOR NOA (LM)				Date	09/20/16			
Desc.	ANCHOR LOCATIONS A				Drawn By	J ROSOWSKI			
Rev A		Rev A		Rev A		Rev A		Rev A	
Rev B		Rev B		Rev B		Rev B		Rev B	

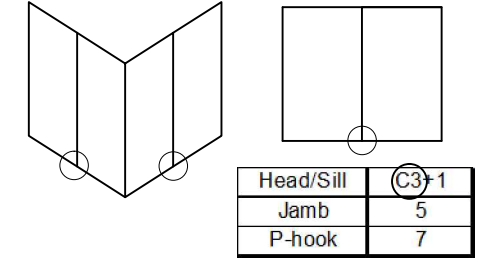
HEAD CLUSTER ANCHORS LAYOUT (USES FRAME FIN-ADDON):



SILL CLUSTER ANCHORS LAYOUT:



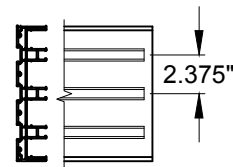
FIGURES PERTAIN TO THE FOLLOWING SILL CLUSTER ANCHOR LOCATIONS:



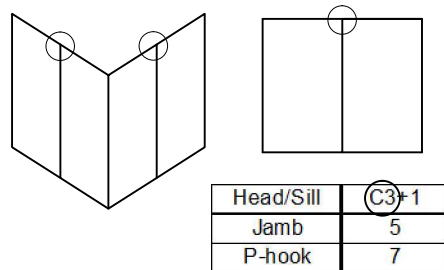
NOTES:

1) ALL DIMENSIONS SHOWN ARE BASED ON MINIMUM ALLOWED.

2) TRACK-TO-TRACK DISTANCE IS 2.375":

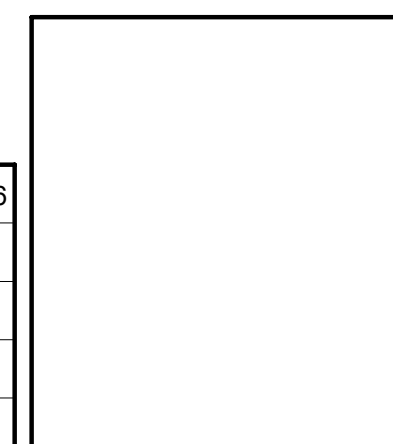


FIGURES PERTAIN TO THE FOLLOWING HEAD CLUSTER ANCHOR LOCATIONS:

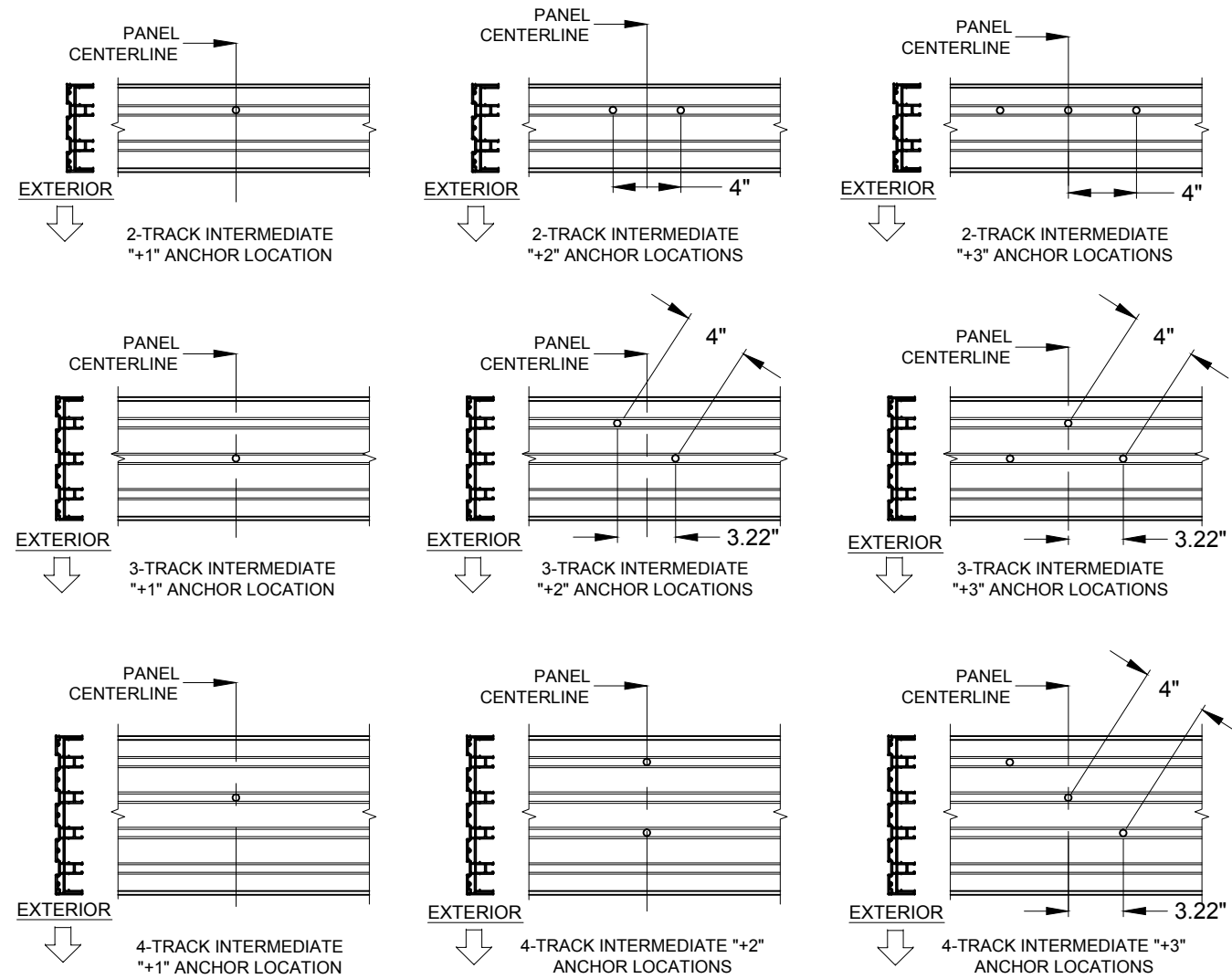


1070 TECHNOLOGY DRIVE
N. VENICE, FL 34275
(941)-480-1600

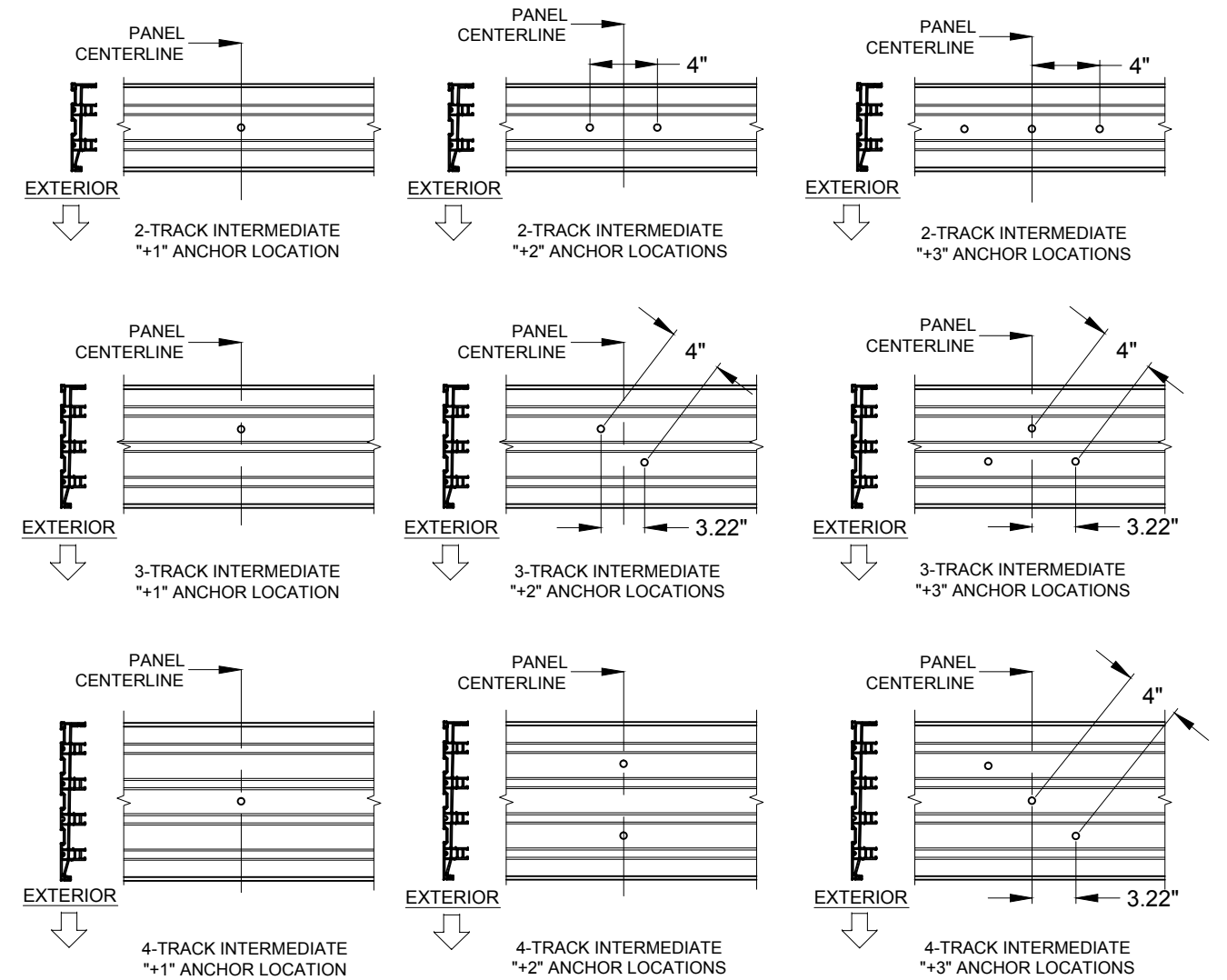
Series	SGD-5570	Scale	NTS	Sheet	5 OF 9	DWG No.	5570FIN.1	Rev. No.	
Desc.	VINYL SLIDING GLASS DOOR NOA (LM)		Date	09/20/16		Drawn By	J ROSOWSKI		
Rev 1		Rev 1		Rev 1		Rev 1		Rev 1	
Rev 2		Rev 2		Rev 2		Rev 2		Rev 2	



HEAD "+" INTERMEDIATE ANCHORS LAYOUT (USES FRAME FIN-ADDON):



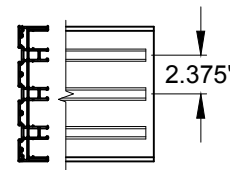
SILL "+" INTERMEDIATE ANCHORS LAYOUT:



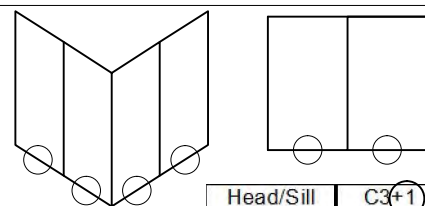
NOTES:

1) ALL DIMENSIONS SHOWN ARE BASED ON MINIMUM ALLOWED.

2) TRACK-TO-TRACK DISTANCE IS 2.375":

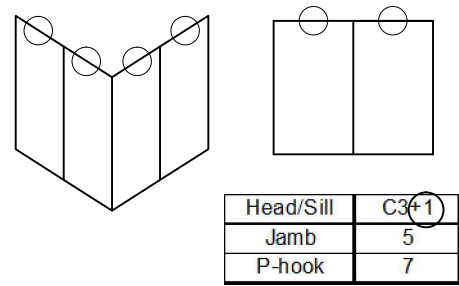


FIGURES PERTAIN TO THE FOLLOWING SILL INTERMEDIATE ANCHOR LOCATIONS:



Head/Sill	C3+1
Jamb	5
P-hook	7

FIGURES PERTAIN TO THE FOLLOWING HEAD INTERMEDIATE ANCHOR LOCATIONS:

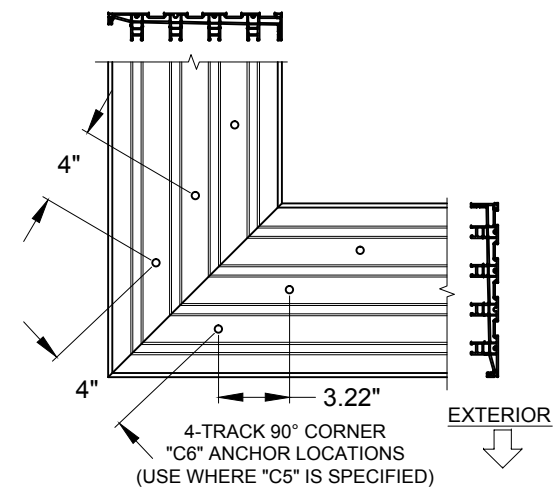
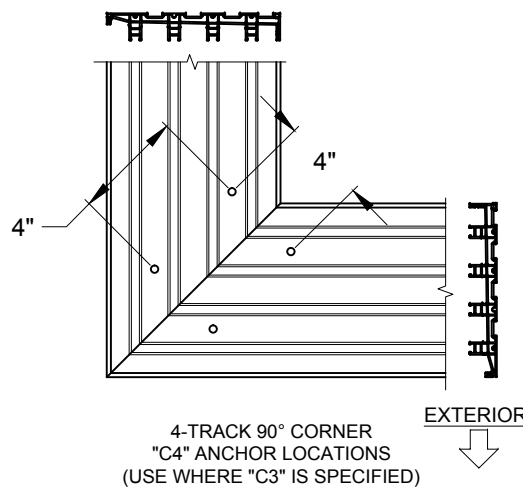
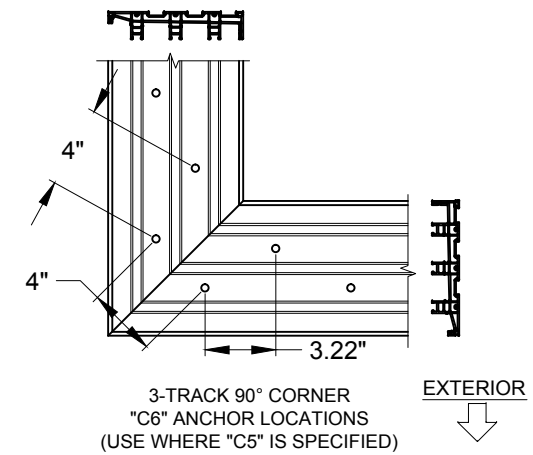
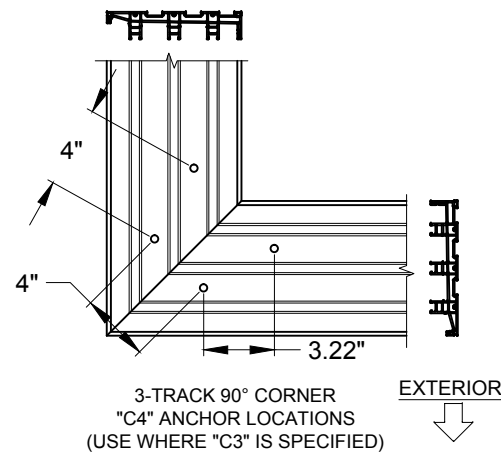
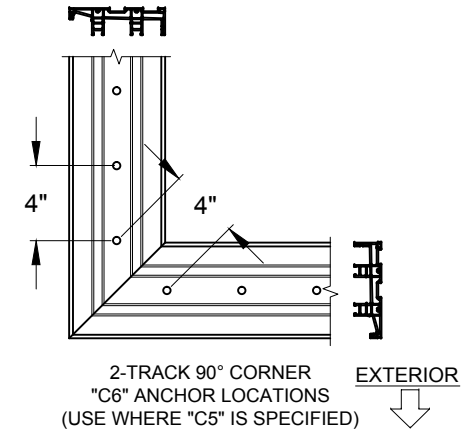
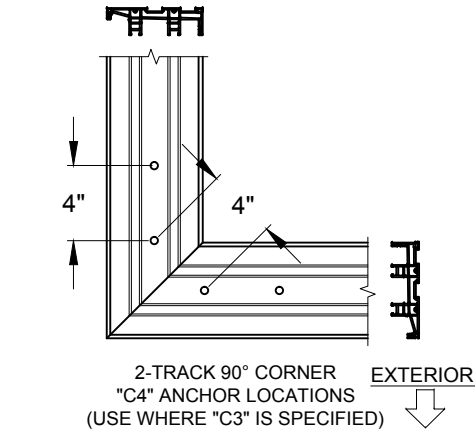
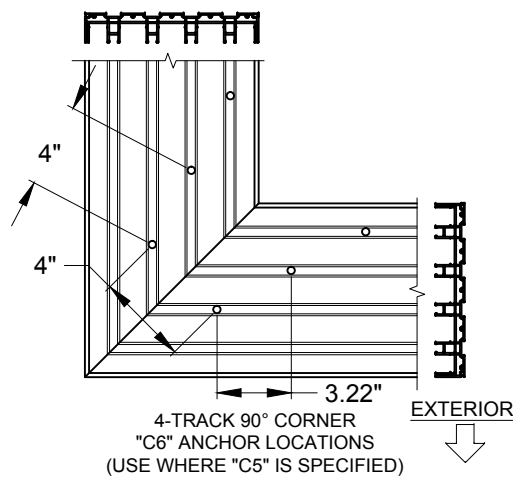
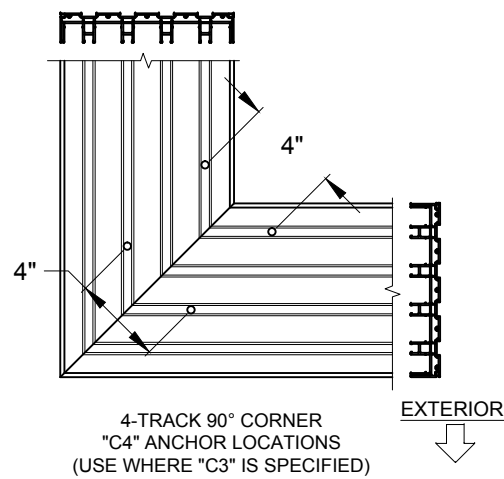
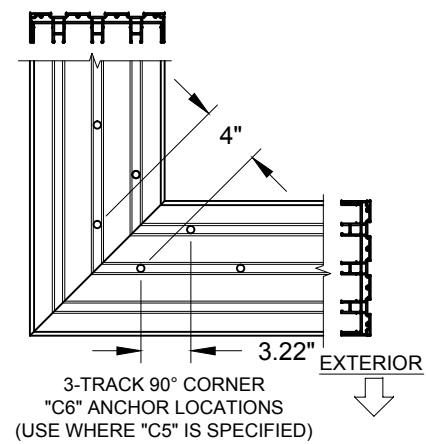
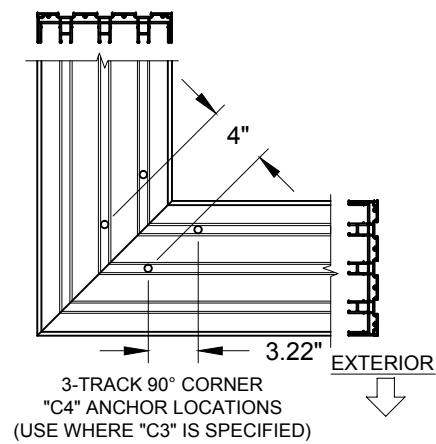
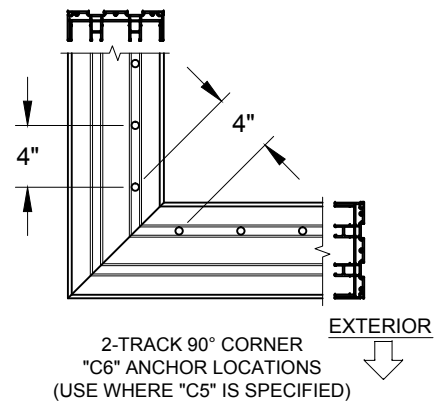
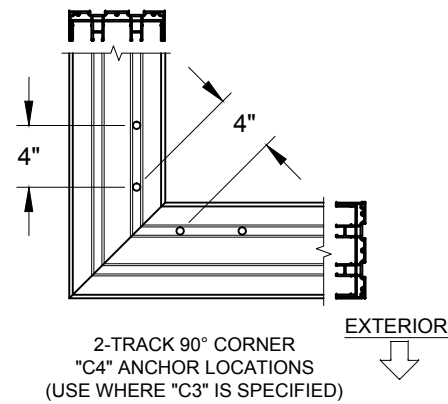


PGT
 1070 TECHNOLOGY DRIVE
 N. VENICE, FL 34275
 (941)-480-1600

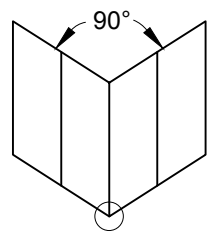
Series	SGD-5570	Scale	NTS	Sheet	6 OF 9	DWG No.	5570FIN.1	Rev. No.	
Title	VINYL SLIDING GLASS DOOR		Date	09/20/16					
Desc.	ANCHOR LOCATIONS C		Drawn By	J ROSOWSKI					
Rev 1	Date	Rev 2	Date						

HEAD 90° CORNER CLUSTER ANCHORS LAYOUT (USES FRAME FIN-ADDON):

SILL 90° CORNER CLUSTER ANCHORS LAYOUT:

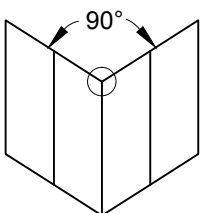


FIGURES PERTAIN TO THE FOLLOWING 90° CORNER SILL ANCHOR LOCATIONS:



Head/Sill	C3#1
Jamb	5
P-hook	7

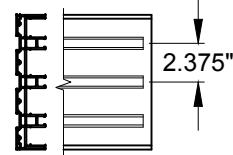
FIGURES PERTAIN TO THE FOLLOWING 90° CORNER HEAD ANCHOR LOCATIONS:



Head/Sill	C3#1
Jamb	5
P-hook	7

NOTES:

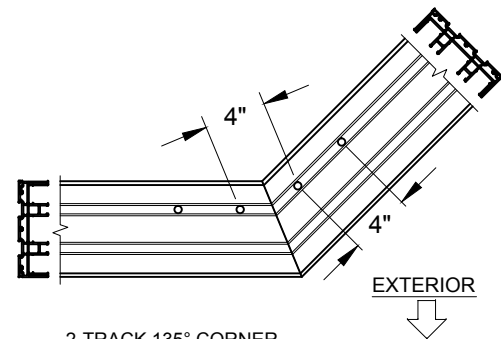
- 1) ALL DIMENSIONS SHOWN ARE BASED ON MINIMUM ALLOWED.
- 2) DETAILS DEPICT ANCHOR QUANTITY AND SPACING, AND WOULD BE SIMILAR FOR OUTSIDE (SHOWN) AND INSIDE CORNER CONFIGURATIONS.
- 3) TRACK-TO-TRACK DISTANCE IS 2.375":



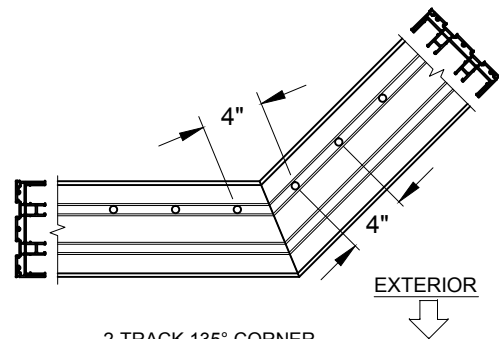
PGT
 1070 TECHNOLOGY DRIVE
 N. VENICE, FL 34275
 (941)-480-1600

Series	SGD-5570	Scale	NTS	Sheet	7 OF 9	DWG No.	5570FIN.1	Rev. No.	
Title	VINYL SLIDING GLASS DOOR		Date	09/20/16		Anchor Locations D		Drawn By	J ROSOWSKI
Rev 1	Date	Rev 2	Date	Rev 1	Date	Rev 2	Date	Rev 1	Date

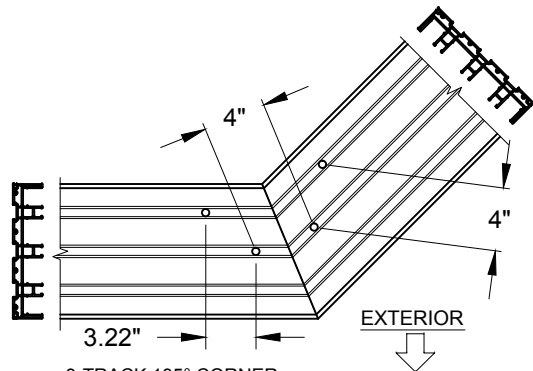
HEAD 135° CORNER CLUSTER ANCHORS LAYOUT (USES FRAME FIN-ADDON):



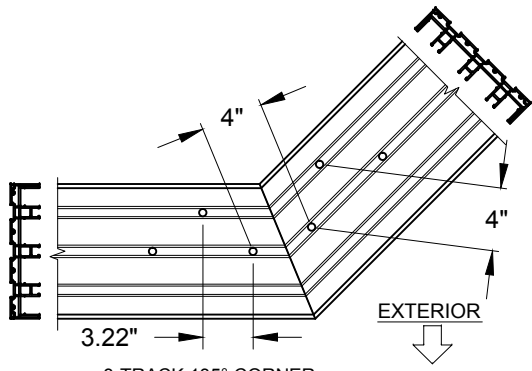
2-TRACK 135° CORNER
"C4" ANCHOR LOCATIONS
(USE WHERE "C3" IS SPECIFIED)



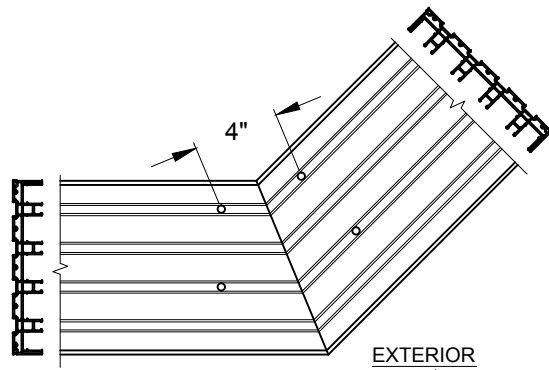
2-TRACK 135° CORNER
"C6" ANCHOR LOCATIONS
(USE WHERE "C5" IS SPECIFIED)



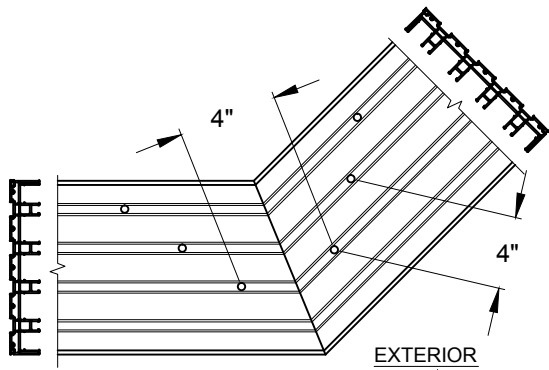
3-TRACK 135° CORNER
"C4" ANCHOR LOCATIONS
(USE WHERE "C3" IS SPECIFIED)



3-TRACK 135° CORNER
"C6" ANCHOR LOCATIONS
(USE WHERE "C5" IS SPECIFIED)

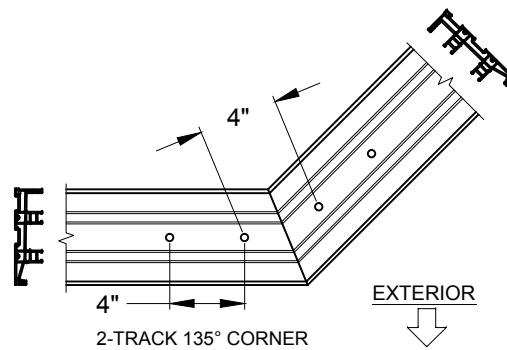


4-TRACK 135° CORNER
"C4" ANCHOR LOCATIONS
(USE WHERE "C3" IS SPECIFIED)

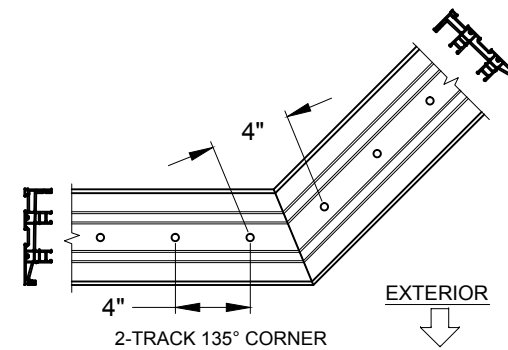


4-TRACK 135° CORNER
"C6" ANCHOR LOCATIONS
(USE WHERE "C5" IS SPECIFIED)

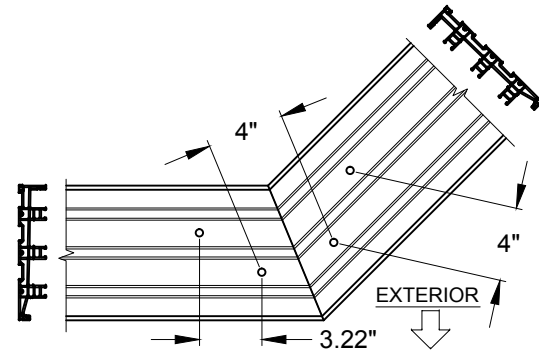
SILL 135° CORNER CLUSTER ANCHORS LAYOUT:



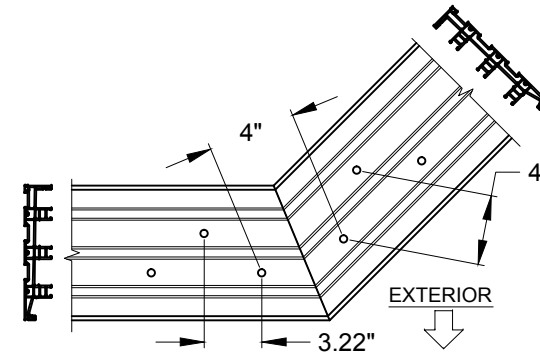
2-TRACK 135° CORNER
"C4" ANCHOR LOCATIONS
(USE WHERE "C3" IS SPECIFIED)



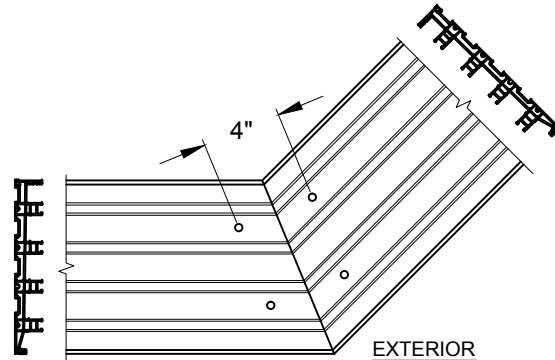
2-TRACK 135° CORNER
"C6" ANCHOR LOCATIONS
(USE WHERE "C5" IS SPECIFIED)



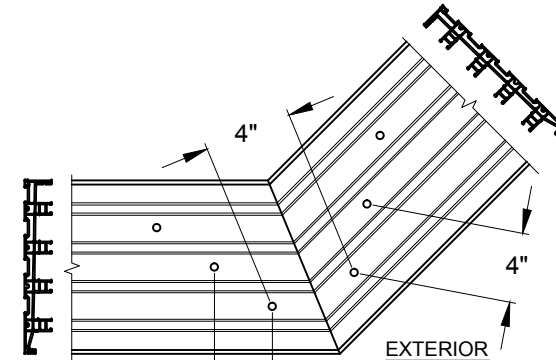
3-TRACK 135° CORNER
"C4" ANCHOR LOCATIONS
(USE WHERE "C3" IS SPECIFIED)



3-TRACK 135° CORNER
"C6" ANCHOR LOCATIONS
(USE WHERE "C5" IS SPECIFIED)

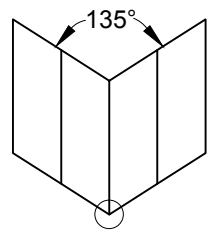


4-TRACK 135° CORNER
"C4" ANCHOR LOCATIONS
(USE WHERE "C3" IS SPECIFIED)



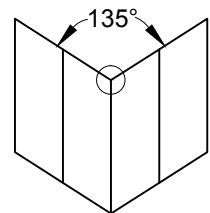
4-TRACK 135° CORNER
"C6" ANCHOR LOCATIONS
(USE WHERE "C5" IS SPECIFIED)

FIGURES PERTAIN TO THE FOLLOWING 135° CORNER SILL ANCHOR LOCATIONS:



Head/Sill	C3-1
Jamb	5
P-hook	7

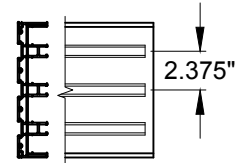
FIGURES PERTAIN TO THE FOLLOWING 135° CORNER HEAD ANCHOR LOCATIONS:



Head/Sill	C3-1
Jamb	5
P-hook	7

NOTES:

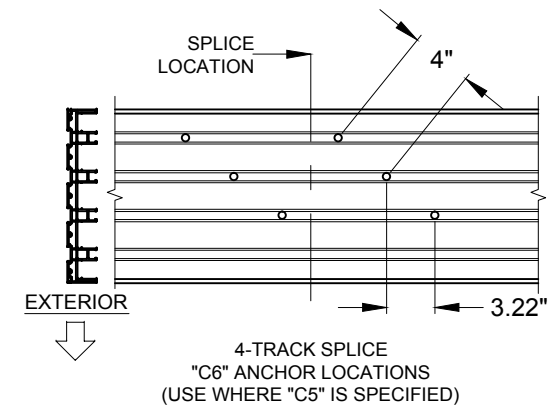
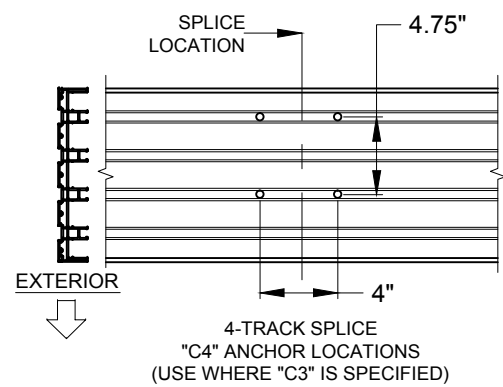
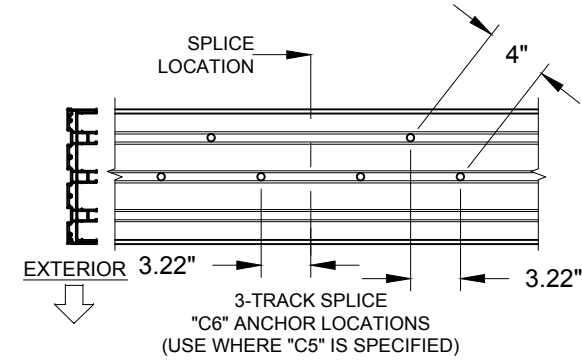
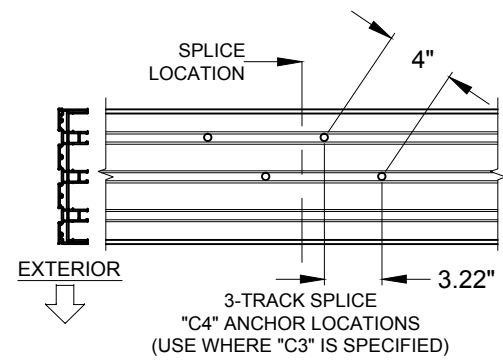
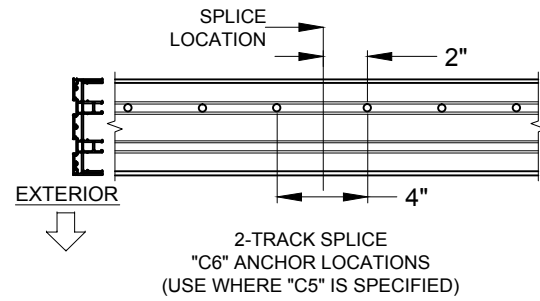
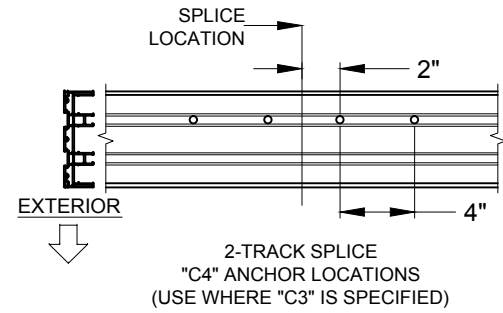
- 1) ALL DIMENSIONS SHOWN ARE BASED ON MINIMUM ALLOWED.
- 2) DETAILS DEPICT ANCHOR QUANTITY AND SPACING, AND WOULD BE SIMILAR FOR OUTSIDE (SHOWN) AND INSIDE CORNER CONFIGURATIONS.
- 3) TRACK-TO-TRACK DISTANCE IS 2.375":



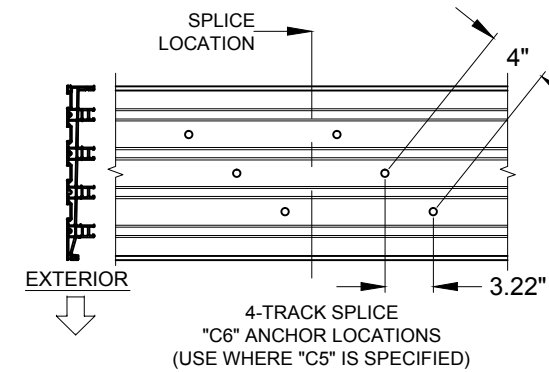
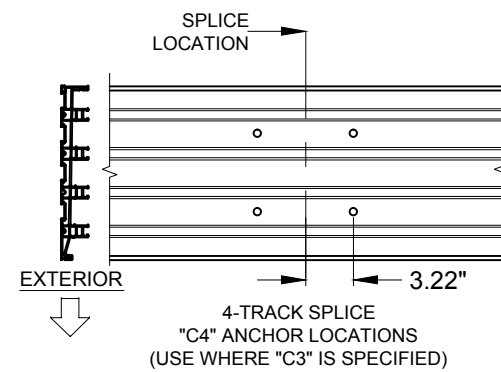
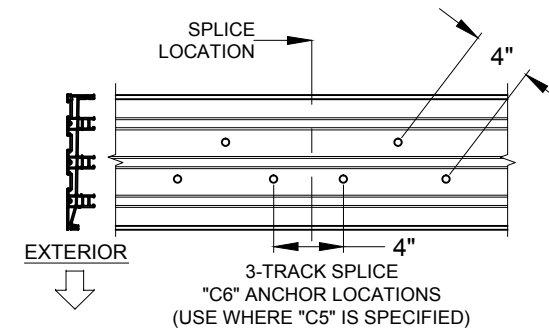
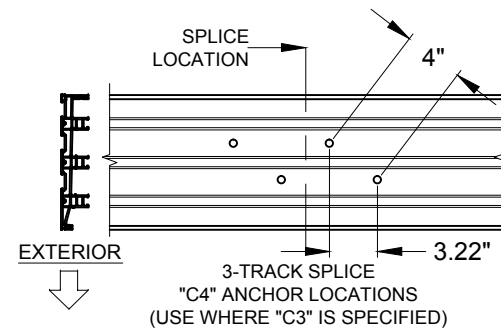
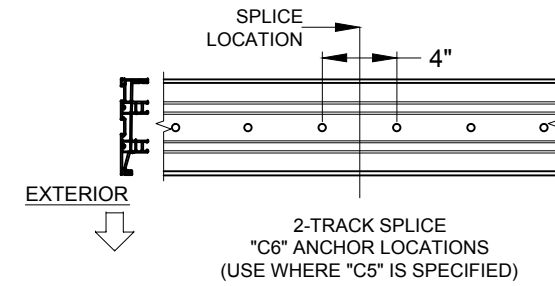
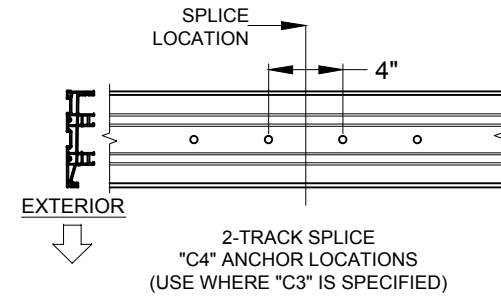
PGT
1070 TECHNOLOGY DRIVE
N. VENICE, FL 34275
(941)-480-1600

Series	SGD-5570	Scale	NTS	Sheet	8 OF 9	DWG No.	5570FIN.1	Rev. No.	
Title	VINYL SLIDING GLASS DOOR		Date	09/20/16					
Desc.	ANCHOR LOCATIONS E		Drawn By	J ROSOWSKI					
Rev 1	Date	Rev 2	Date						

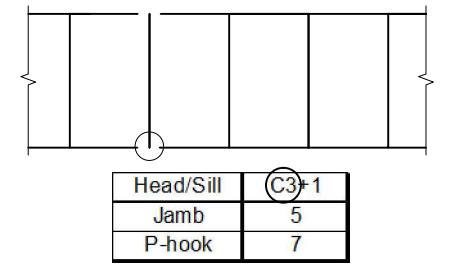
HEAD SPLICE ANCHORS LAYOUT @ INTERLOCK OR ASTRAGAL (USES FRAME FIN-ADDON):



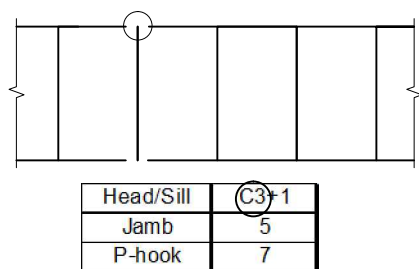
SILL SPLICE ANCHORS LAYOUT @ INTERLOCK OR ASTRAGAL:



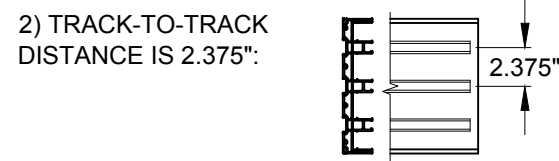
FIGURES PERTAIN TO THE FOLLOWING SPLICED SILL ANCHOR LOCATIONS:



FIGURES PERTAIN TO THE FOLLOWING SPLICED HEAD ANCHOR LOCATIONS:



NOTES:
1) ALL DIMENSIONS SHOWN ARE BASED ON MINIMUM ALLOWED.



1070 TECHNOLOGY DRIVE
N. VENICE, FL 34275
(941)-480-1600

Series	SGD-5570	Scale	NTS	Sheet	9 OF 9	DWG No.	5570FIN.1	Rev. No.	
Desc.	VINYL SLIDING GLASS DOOR		Date	09/20/16					
Rev 1	ANCHOR LOCATIONS F		Drawn By	J ROSOWSKI					
Rev 2			Rev 1 Date						