

Classic Line Series 600

Aluminum Thermally Broken Multi-Slide



► Panel Hardware

Lockset
H444.4SSS



1.81" Roller
H443SSS



Premium Handle
H446.1 S or B (non-keyed)



Premium Handle
H446.9 S or B (keyed)



Dummy Premium Handle
H446.8 S or B



Flush Handle
H480 S or B



Classic Line Series 600

Aluminum Thermally Broken Multi-Slide



► Panel Hardware

Flush Handle Actuator
H482 S or B (non-keyed)



Flush Handle Actuator
H481 S or B (keyed)



Dummy Flush Handle
H480 S or B



Premium Stop
H683 S or B



Backing Plate
H446.6S



Hole Plug
H447 B,S,W,H



Rubber Plug
H448B



Classic Line Series 600

Aluminum Thermally Broken Multi-Slide

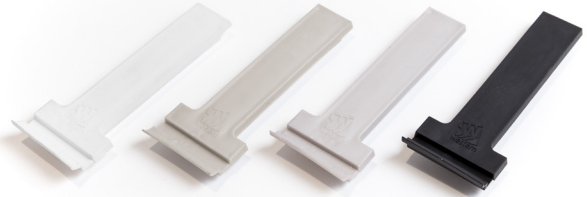


► Panel Hardware

Rectangle Plug
H600.1 B,S,W,H



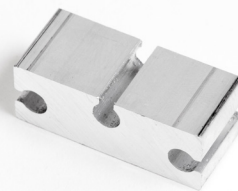
End Sweep Plug
H601 B,S,W,H



Finger Pull
H643



Screw Boss Adapter
H669M



Screw Boss
H821M



Rail Extension
E829



Classic Line Series 600

Aluminum Thermally Broken Multi-Slide



► Frame Hardware

Foam Block
H240.4B



Strike Plate
H444.3SSS



Track Cap
H453.5SSS = 336"
H453SSS = 288"



Anchor Plug
H458



Fixed Anchor Plate
H623B



Track Cover
W642



High Leg Track Cover
W645



Performance Line Series 7600

Thermally Strutted Aluminum Multi-Slide



► Panel Hardware

Lockset
H444.5SSS



1.81" Roller
H443SSS



Premium Handle
H446.1 S or B (non-keyed)



Premium Handle
H446.9 S or B (keyed)



Dummy Premium Handle
H446.8 S or B



Flush Handle
H480 S or B



Performance Line Series 7600

Thermally Strutted Aluminum Multi-Slide



► Panel Hardware

Flush Handle Actuator
H482 S or B (non-keyed)



Flush Handle Actuator
H481 S or B (keyed)



Dummy Flush Handle
H480 S or B



Premium Stop
H6883 S or B



Rubber Plug
H448B



Hole Plug
H447 B,S,W,H



Lock Backing Plate
H7646



Performance Line Series 7600

Thermally Strutted Aluminum Multi-Slide



► Frame Hardware

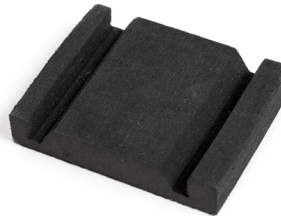
Strike Plate
H7619



Foam Block
H2840



Jamb To Endplate Foam
H7639



Classic Line Series 3600

Vinyl Multi-Slide



► Panel Hardware

Lockset
H444.4SSS



1.81" Roller
H443SSS



Premium Handle
H446.1 S or B (non-keyed)



Premium Handle
H446.9 S or B (keyed)



Dummy Premium Handle
H446.8 S or B



Flush Handle
H480 S or B



Classic Line Series 3600

Vinyl Multi-Slide



► Panel Hardware

Flush Handle Actuator
H482 S or B (non-keyed)



Flush Handle Actuator
H481 S or B (keyed)



Dummy Flush Handle
H480 S or B



Premium Stop
H683 S or B



Rubber Plug
H448B



Finger Pull
H643



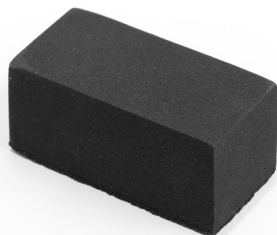
Classic Line Series 3600

Vinyl Multi-Slide



► Frame Hardware

Foam Block
H2640



Strike Plate
H444.3SSS



Track Cap
H453.5SSS = 336"
H453SSS = 288"



Track Cover
W2842



Classic Line Series 2600

Wood Clad Multi-Slide



► Panel Hardware

Lockset
H444.4SSS



2.12" Roller
H2643SS



Premium Handle
H446.1 S or B (non-keyed)



Premium Handle
H446.9 S or B (keyed)



Dummy Premium Handle
H446.8 S or B



Flush Handle
H480 S or B



Classic Line Series 2600

Wood Clad Multi-Slide



► Panel Hardware

Flush Handle Actuator
H482 S or B (non-keyed)



Flush Handle Actuator
H481 S or B (keyed)



Dummy Flush Handle
H480 S or B



Wood Plug
L447



Backing Plate
H446.6S



Finger Pull
H643



Classic Line Series 2600

Wood Clad Multi-Slide



► Frame Hardware

Strike Plate

H444.3SSS



Track Cap

H453.5SSS = 336"

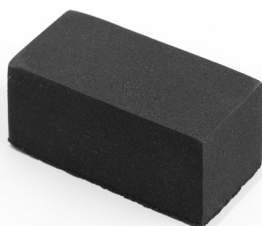
H453SSS = 288"



Foam Block

H2640 = 1.75"

H2840 = 2.25"



Anchor Plug

F458



Fixed Anchor Plate

H623B



Foam Gasket

H2641



Track Cover

W2642 = 1.75"

W2842 = 2.25"



High Leg Track Cover

W645



Classic Line Series 9500

Aluminum Thermally Broken Floor Load Bi-Fold



► Panel Hardware

Magnetic Catch

H629 S or B



Dallas Handle Set

H960 S or B



Active Lock

H900S



Inactive Lock

H903S



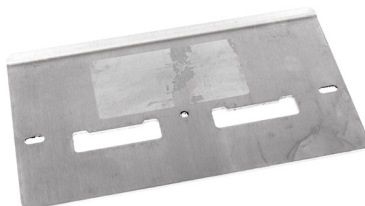
Active Strike

H907.2 S



Active Jamb Strike

H907.1 S



Inactive Lock Handle

H911 S or B



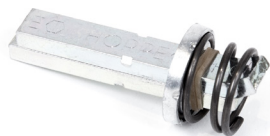
Classic Line Series 9500

Aluminum Thermally Broken Floor Load Bi-Fold



► Panel Hardware

Inactive Handle Shaft
H903.1S



Inactive Bottom Rod
H653.1SS



Inactive Upper Rod

H653.2SS = 50" H653.3SS = 60" H653.4SS = 72"
H653.5SS = 84" H653.6SS = 108" H653.7SS = 54.37"



All Thread
H655S



Nut
H657S



Lock Spacer
H903.2S



Sheer Block
H920



Classic Line Series 9500

Aluminum Thermally Broken Floor Load Bi-Fold

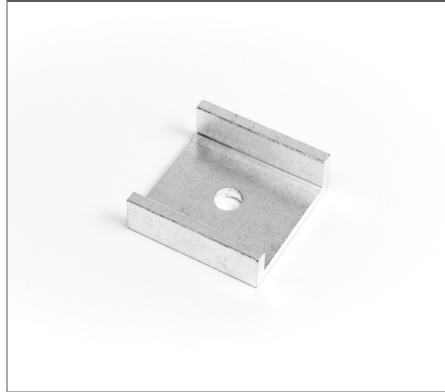


► Panel Hardware

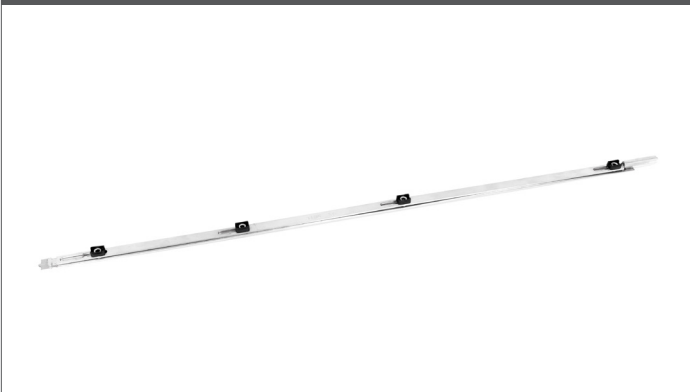
Inactive Lock Guide
H921



Panel Connector Brace
H922



Active Mid Extension
H902.2S



Active Upper Extension
H901.4S



Classic Line Series 9500

Aluminum Thermally Broken Floor Load Bi-Fold



► Frame Hardware

Mid Pivot
H930.1 S or B



Hinge Gasket
H931.1 B or S



Flat Hinge Set with Handle
H932 B or S



Flat Hinge Set No Handle
H935 B or S



Offset Hinge Set with Handle
H937 B or S



Offset Hinge Set No Handle
H936 B or S



Classic Line Series 9500

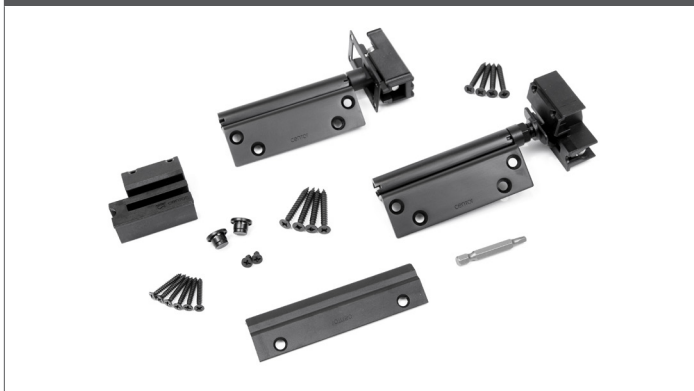
Aluminum Thermally Broken Floor Load Bi-Fold



► Frame Hardware

Floor Load Pivot Set

H950 B or S



Floor Load Intermediate Carrier Set

H953 B or S



RH Offset Carrier Set

H954R B or S



LH Offset Carrier Set

H954L B or S



Performance Line Series 7950

Thermally Strutted Aluminum Head Load Bi-Fold



► Panel Hardware

Magnetic Catch
H629 S or B



Active Jamb Strike
H7951



Astragal Strike
H7955



Inactive Lock Handle
H7959



Dallas Handle Set
H960 S or B



Performance Line Series 7950

Thermally Strutted Aluminum Head Load Bi-Fold



► Frame Hardware

Pivot Set
H930 S or B



Mid Pivot
H930.1 S or B



Intermediate Carrier Set
H933 S or B



Flat Hinge Set with Handle
H932 S or B



Offset Hinge Set with Handle
H937 S or B



LH Offset Carrier Set
H934L S or B



RH Offset Carrier Set
H934R S or B

